

Heaton Road, CR4

£1,650 PCM

A newly refurbished split level apartment with high ceilings, bright open-plan living, a brand new kitchen with dishwasher, two double bedrooms and two bathrooms.

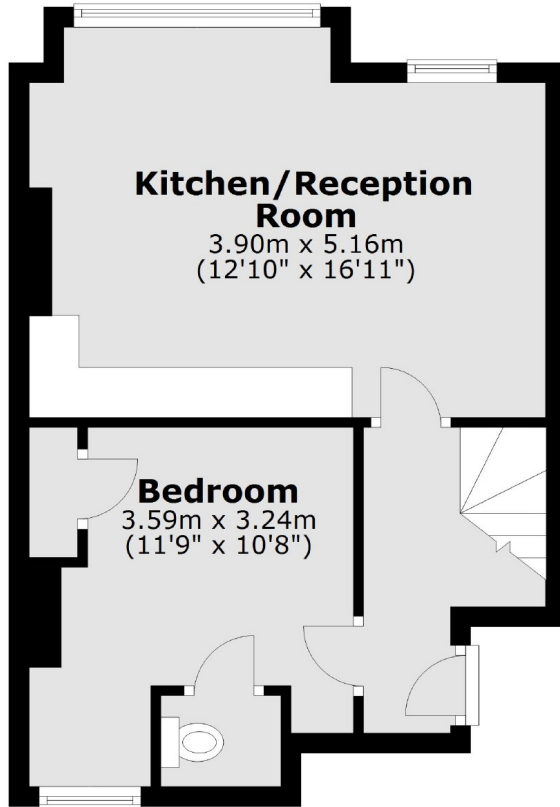
Heaton Road is a residential Road in Tooting, within close proximity to both Tooting Overground and Underground Stations, the Gorringe Park Pub as well as other local amenities.

Features

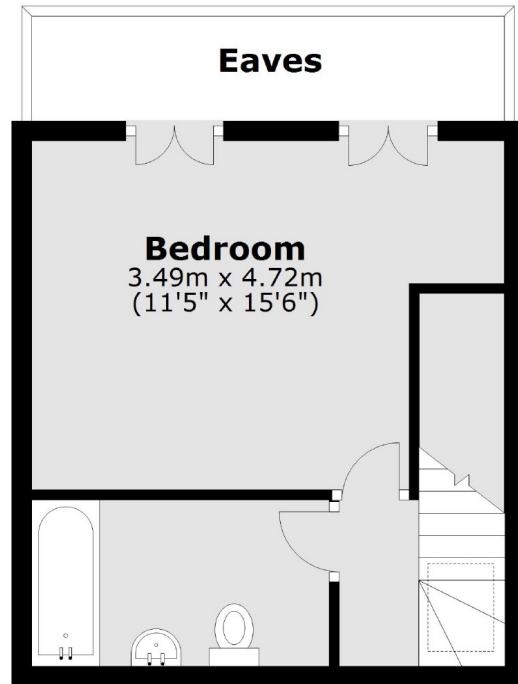
- Newly Refurbished
- Split Level
- High Ceilings
- Two Double Bedrooms
- Open-Plan Living
- Dishwasher

Heaton Road, Mitcham, CR4

First Floor



Second Floor



Total area: approx. 60.0 sq. metres (645.4 sq. feet)