



## Mitcham Lane, SW16

£400,000

Thoughtfully designed with style and comfort in mind, this two double bedroom conversion has been finished with real attention to detail. The centre piece is the large open plan kitchen reception which is flooded with natural light and provides the perfect space for entertaining.

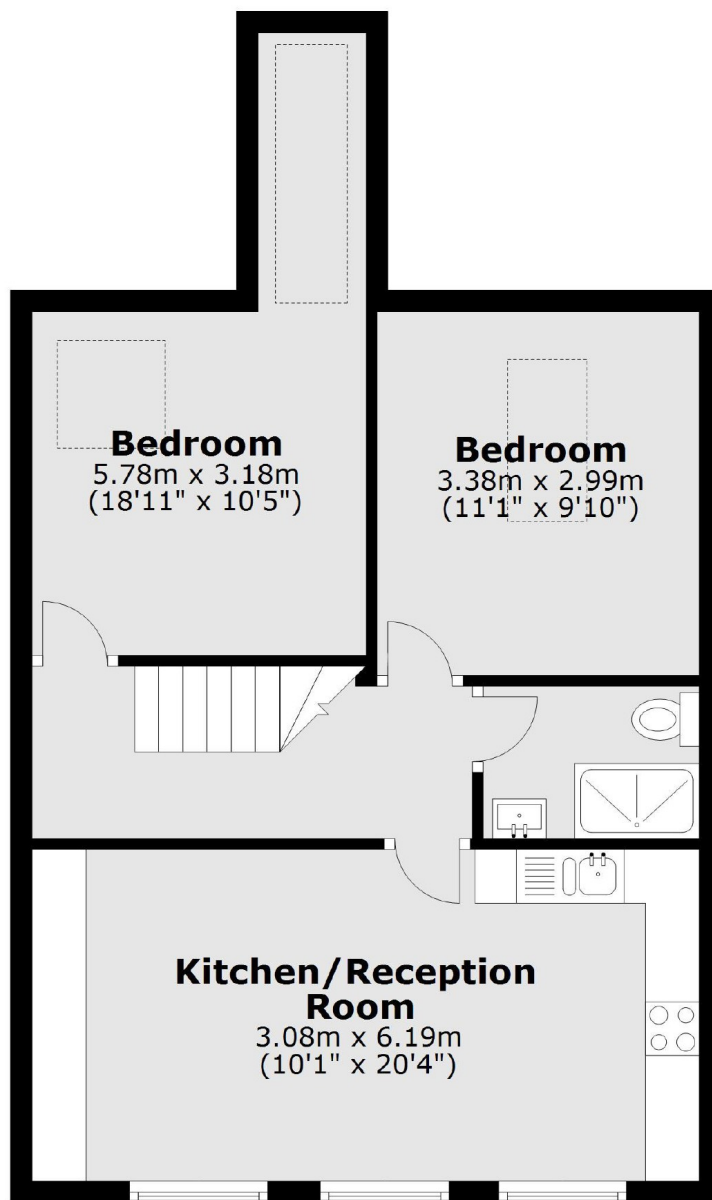
Mitcham Lane is perfectly positioned for the many shops, bars and restaurants of Streatham and Tooting Broadway Town Centres with the vast green open spaces of Tooting Bec Common also nearby. A mix of Thameslink Overground and Northern Line Tube stations are also within a stone's throw away.

### Features

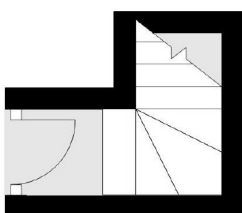
- Top Floor Conversion
- Excellent Decorative Condition
- Two Double Bedrooms
- Large Kitchen/Reception
- Stylish Shower room/WC
- Convenient Location

**Mitcham Lane,  
London, SW16**

### **Third Floor**



### **Second Floor**



Total area: approx. 54.6 sq. metres (587.7 sq. feet)