



Mellison Road, SW17

£525,000

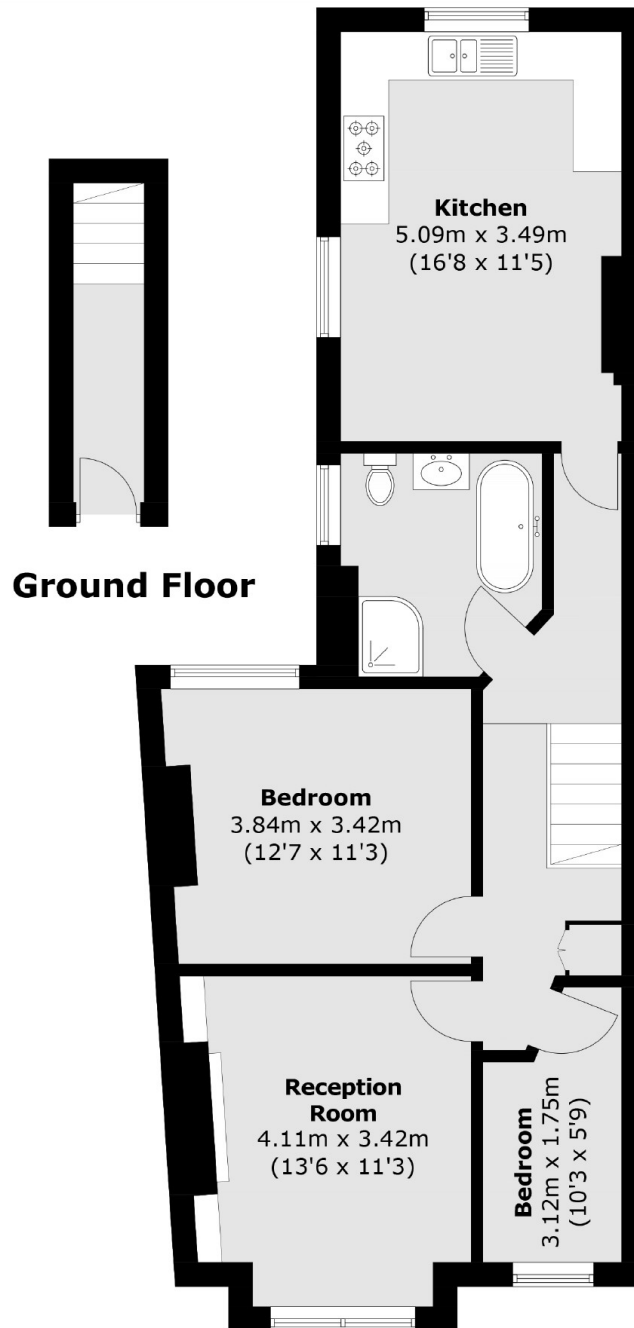
****OFFERS IN EXCESS OF**** A truly stunning and larger than average upper maisonette occupying the first floor of this handsome Victorian building. Opening onto a large eat-in kitchen with integrated appliances and a comfortable dining area, the property retains a generous front reception room with a log burner and bespoke cabinetry, two double bedrooms and a four piece family bathroom. The property has further scope to extended via a demised loft (STPP and consent).

Mellison Road is enviably located for the many shops, bars and restaurants of central Tooting with the excellent transports links of Tooting Broadway Underground and Tooting Railway stations within walking distance.

Features

- Upper Maisonette
- Two Double Bedrooms
- Large Footprint
- Potential to Extend (STPP)
- Stylish Kitchen
- Front Reception Room

Mellison Road, London, SW17



Total area (approx.): 72.5 sq. m (780.3 sq. ft)

Dexters

Tooting
48 Tooting High Street
London
SW17 0RG
Sales
020 8545 8582

Energy Rating: - We aim to make our particulars both accurate and reliable. However they are not guaranteed; nor do they form part of an offer or contract. If you require clarification on any points then please contact us, especially if you're traveling some distance to view. Please note that appliances and heating systems have not been tested and therefore no warranties can be given as to their good working order.

 **RICS** | Regulated
Estate Agent
and Letting Agent

dexters.co.uk