



## Drakefield Road, SW17

£585,000

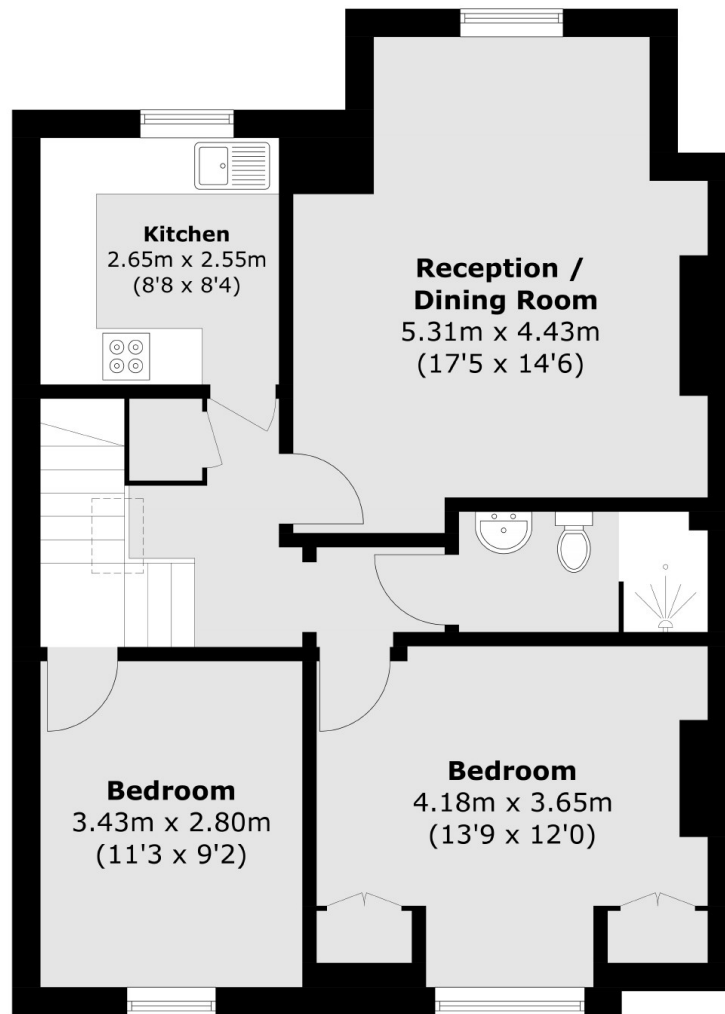
A stunning two double bedroom apartment extending to 757 sqft with a superb reception room furnished with an original fireplace, exposed wooden beams and a comfortable seating/dining area, a separate kitchen, two double bedrooms and a three piece family bathroom. The property also retains a share of the freehold.

Drakefield Road is a quiet tree lined residential street at the heart of the Heaver Estate with the vast array of boutiques, bars and restaurants of Balham on the doorstep. Excellent transport links of Tooting Bec and Balham are also a stone throw away with the vast green open spaces of Tooting Bec Common also within walking distance.

### Features

- Two Double Bedrooms
- Share of Freehold
- Period Features
- Large Reception Room
- Separate Kitchen
- Heaver Estate

# Drakefield Road, London, SW17



**First Floor**



**Ground Floor**

Total area (approx.): 70.4 sq. m (757.8 sq. ft)