



Thrale Road, SW16

£2,600 Per calendar month

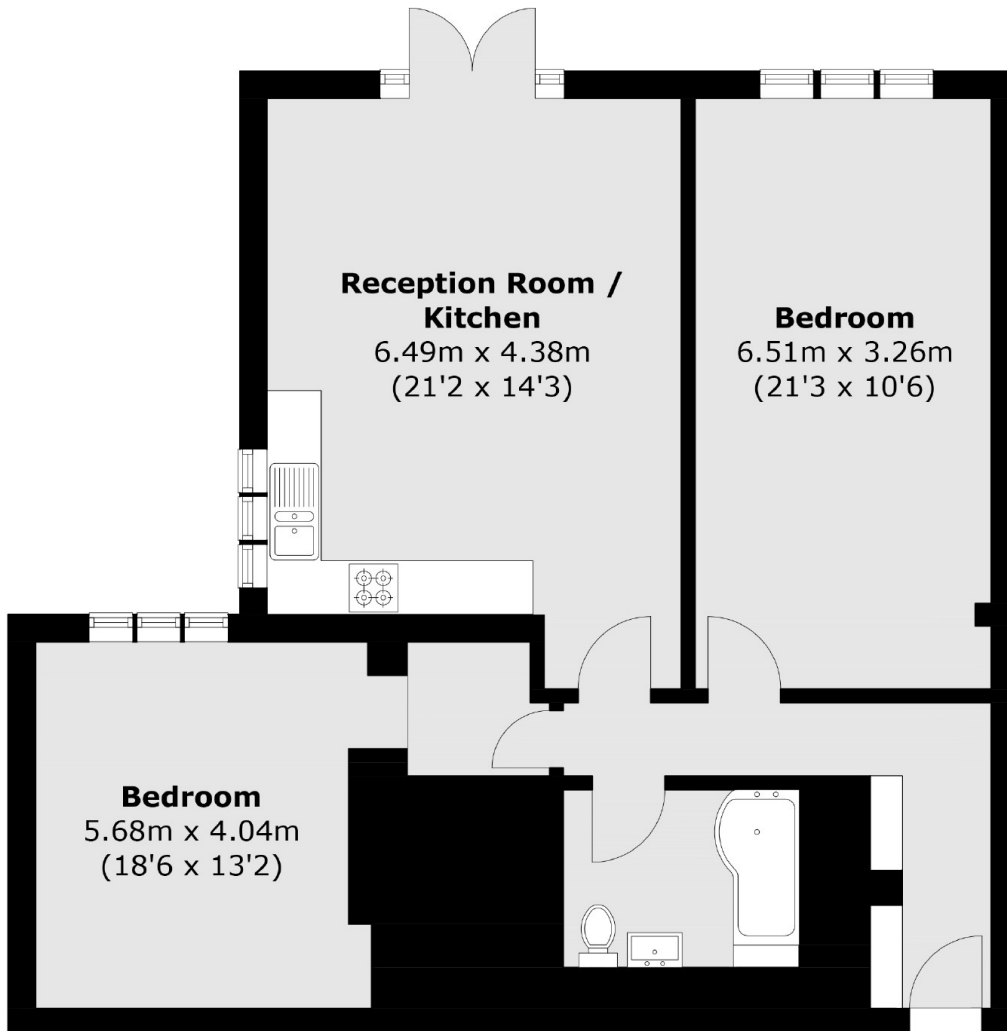
A beautifully presented ground floor flat comprising of a modern open plan kitchen/reception room, two double bedrooms and a modern fitted bathroom. This property also benefits from direct access to a large private garden.

Thrale Road is nestled away in the highly desirable Furzedown Village with the vast amenities, close knit community and shops and bars the area has to offer with Tooting Bec Common also within a short walk away. Excellent transport links can be found via Tooting Broadway Underground and Streatham Overground stations.

Features

- Two Double Bedrooms
- Open Plan
- Spacious Private Garden
- Newly Refurbished
- Excellent Transport Links
- Designated Parking Space

Thrale Road, London, SW16



Total area (approx.): 90.2 sq. m (970.9 sq. ft)