



## Crowborough Road, SW17

£4,000 Per calendar month

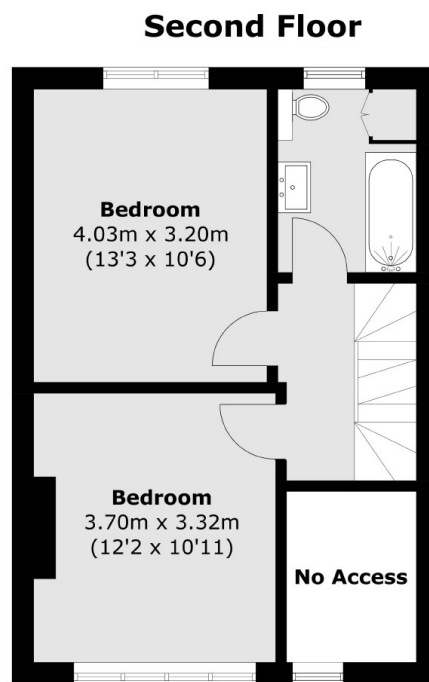
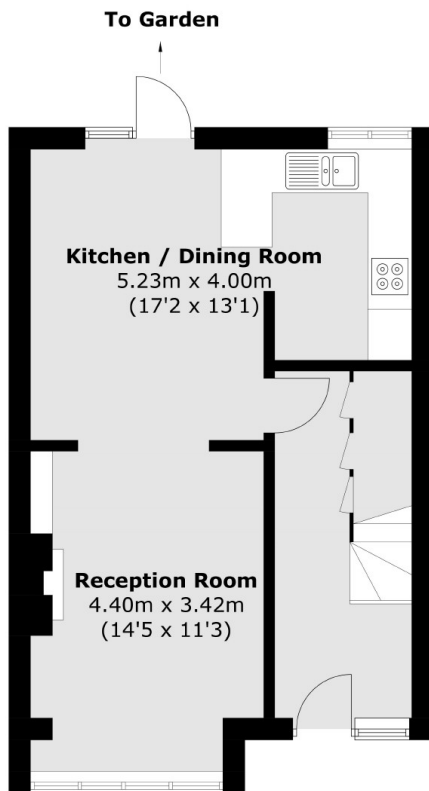
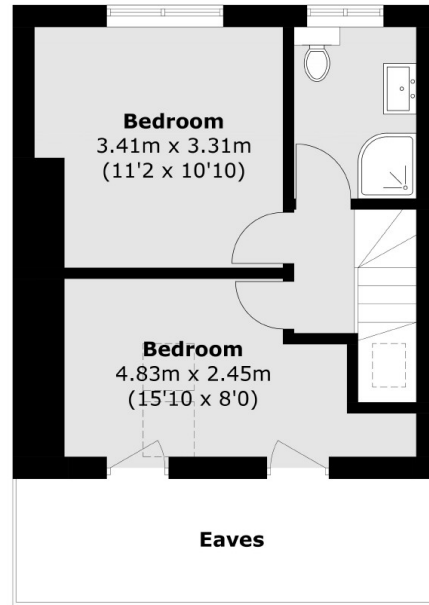
This four bedroom home has been neutrally decorated throughout. The property benefits from a double reception room, eat in kitchen, two bathrooms and a private garden.

Crowborough Road is a tree lined residential street on the doorstep of Furzedown with it's many shops and boutiques nearby. Tooting Broadway Underground and Tooting Railway stations are also within walking distance with excellent promixity to Ofsted outstanding Graveney School.

### Features

- House
- Four Double Bedrooms
- Two Bathrooms
- Double Reception Room
- Private Garden
- Furzedown Village

# Crowborough Road, London, SW17



**Ground Floor**

**First Floor**

Total area (approx.): 110.9 sq. m (1,193.6 sq. ft)  
(Excluding Eaves)