



## Avarn Road, SW17

£560,000

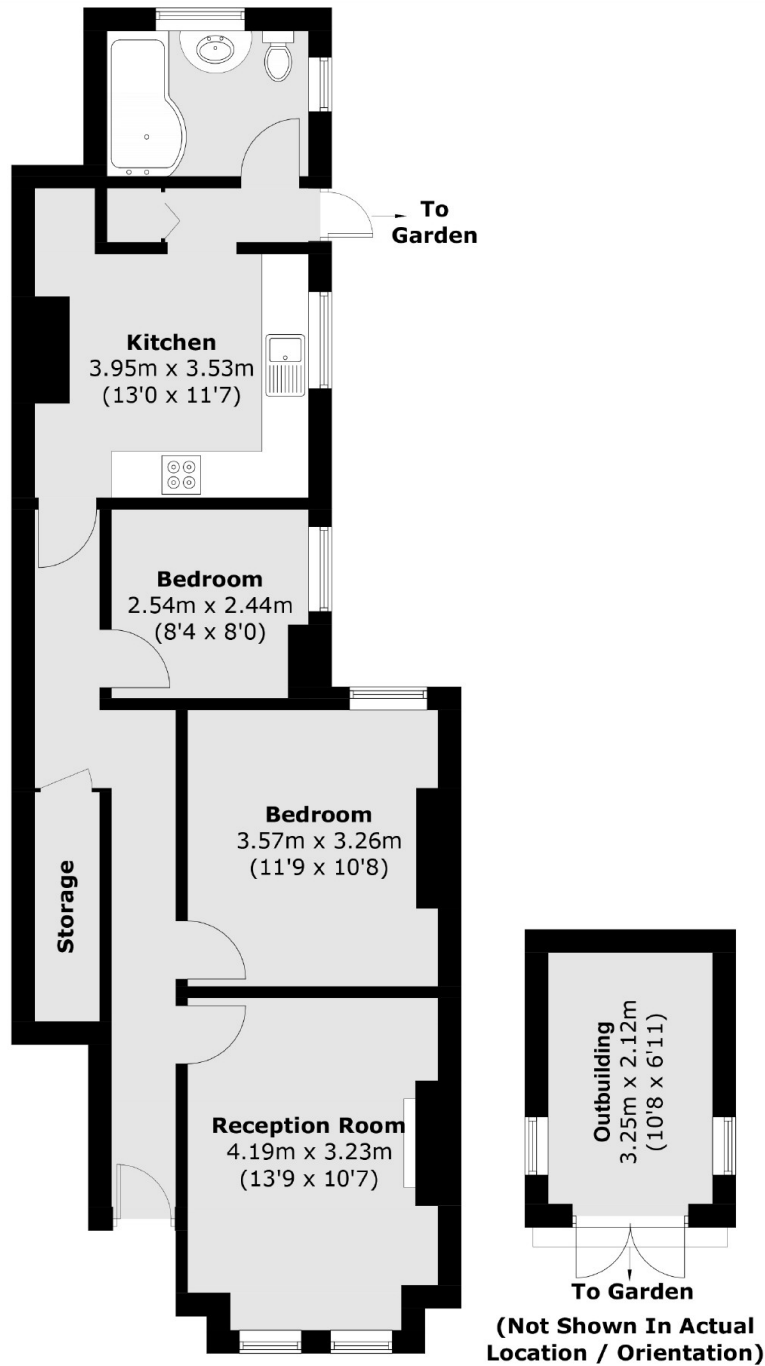
A truly stunning two double bedroom maisonette over the ground floor of this handsome Victorian building comprising a generous front reception room with an original fireplace, two spacious double bedrooms, a large eat-in kitchen, a stylish bathroom and a landscaped rear garden with an office outbuilding.

Avarn Road is a highly desirable residential road located in central Tooting with a vast array of shops, bars and restaurants on the doorstep, with the transport links of Tooting Railway Thames Link Overground and Tooting Broadway Tube stations within walking distance.

### Features

- Two Double Bedrooms
- Private Garden
- Office Outbuilding
- Period Features
- Chain Free
- Own Front Door

# Avarn Road, London, SW17



Total area (approx.): 64.9 sq. m (698.6 sq. ft)  
Outbuilding: 7.1 sq. m (76.4 sq. ft)