



Hazelhurst Road, SW17

£299,950

OFFERS IN EXCESS OF

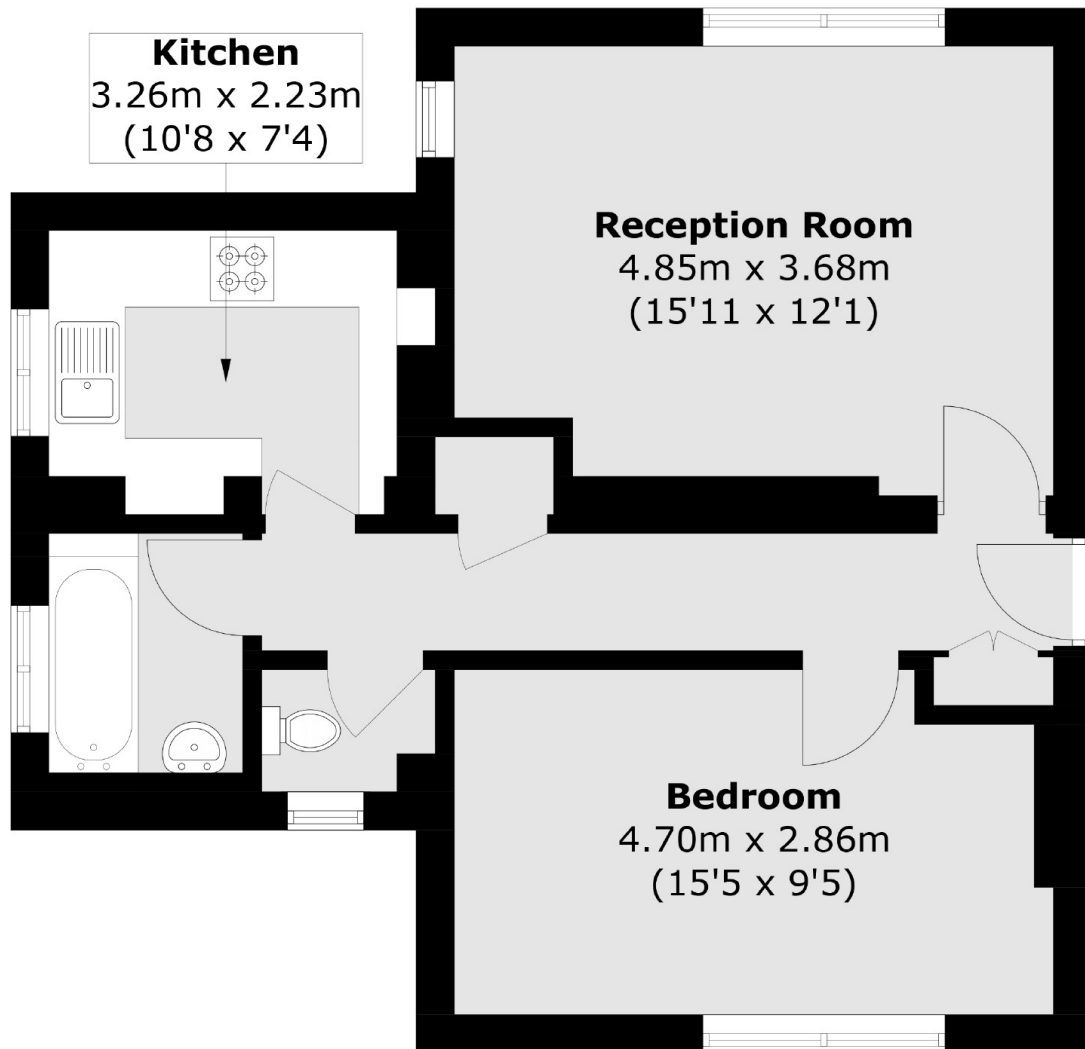
A larger than average and well presented one double bedroom apartment in exacting condition throughout with a comfortable reception room, a spacious kitchen, a large double bedroom with ample space for storage and a family bathroom with a separate w/c.

Hazelhurst Road is situated within a popular grid of roads providing easy access to the many shops, bars and restaurants of Tooting, Earsfield and Wimbledon Town Centres, with the excellent transport links of Tooting Broadway underground station also a short walk away.

Features

- One Double Bedroom
- Large Reception Room
- Excellent Condition
- Communal Grounds
- Separate Kitchen
- Over 500 Sqft

Hazelhurst Road, London, SW17



Ground Floor

Total area (approx.): 49.7 sq. m (535.0 sq. ft)