

Plough Lane, SW17

£550,000

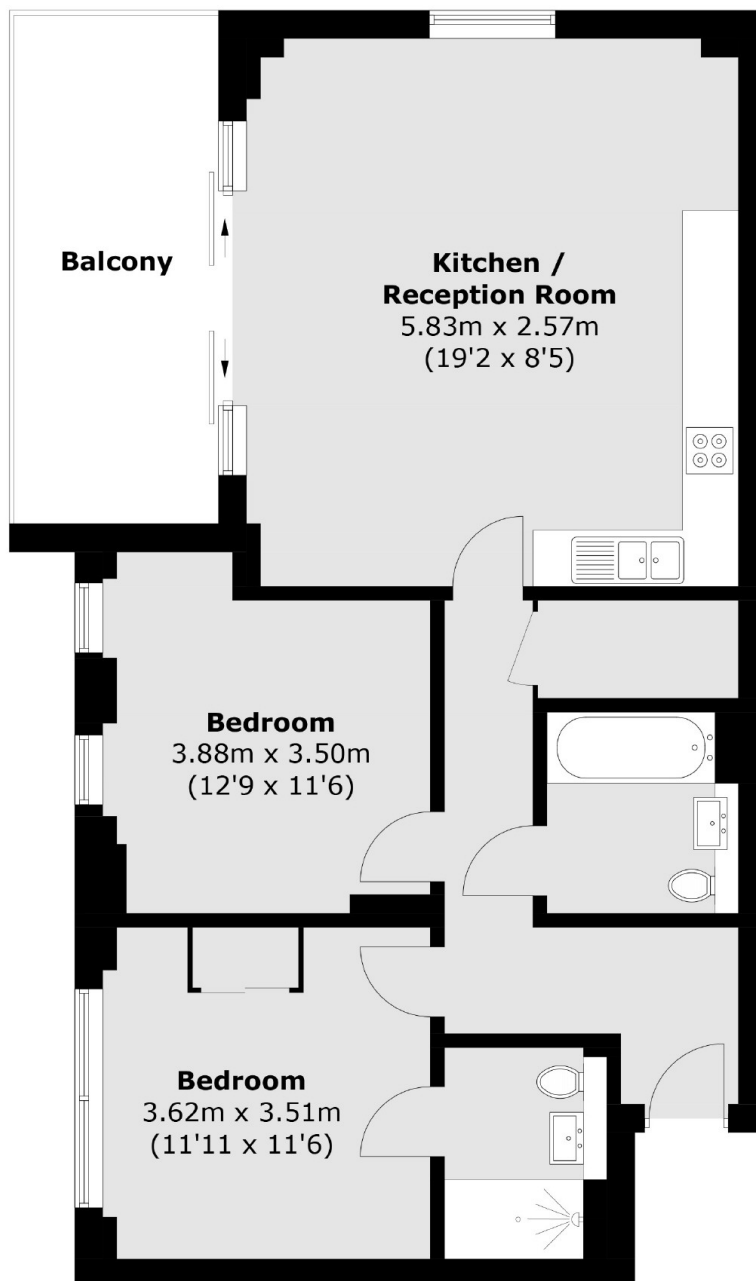
A stunning two double bedroom two bathroom apartment set on the third floor of this stylish modern complex with accommodation that spans to over 800 sqft with a modern open plan kitchen/reception room, private balcony and immaculate interior.

Ideally located within close proximity of both Tooting and Earlsfield town centres and their vast amenities, the property is well located for an eclectic mix of shops, bars and restaurants as well as the excellent transport links via Haydons Road & Tooting Broadway stations.

Features

- Two Double Bedrooms
- Two Bathrooms
- Stylish Apartment
- Open-Plan Kitchen/Reception Room
- Integrated Appliances

Plough Lane, London, SW17



Total area (approx.): 78.9 sq. m (849.3 sq. ft)
Balcony: 11.9 sq. m (128.1 sq. ft)