



**Moring Road, SW17**

**£1,150,000**

**Dexters**



## Moring Road, SW17

A stunning mid terrace home set on one of the most desirable roads in Tooting Bec spanning to just shy of 1500 sqft over three floors with four double bedrooms, an open-plan kitchen/reception room, a large private garden, and two bathrooms.

With a handsome yet imposing exterior, the property invites you in via a front reception room furnished with an original fireplace and a comfortable seating area. The ground floor is wonderfully balanced with an open-plan kitchen/dining room with a stylish yet practical kitchen wonderfully furnished with all and base units, integrated appliances, solid worktops, ample space for dining and floor to ceiling sliding doors leading onto a landscaped garden. The property also benefits from a Garden Annexe.

Over the first and top floors, the property benefits from four double bedrooms and two bathrooms with the principal bedroom complimented by built-in wardrobes.

Moring Road is a tree lined residential road moments away from both Balham and Tooting town centres the vast amenities on offer within walking distance. The vast green open spaces of Tooting Bec Common and excellent transport links of Tooting Bec and Underground stations are also nearby.

### Features

- Four Double Bedrooms
- Large Garden
- Two Bathrooms
- Stunning Kitchen
- Desirable Road
- Garden Annexe





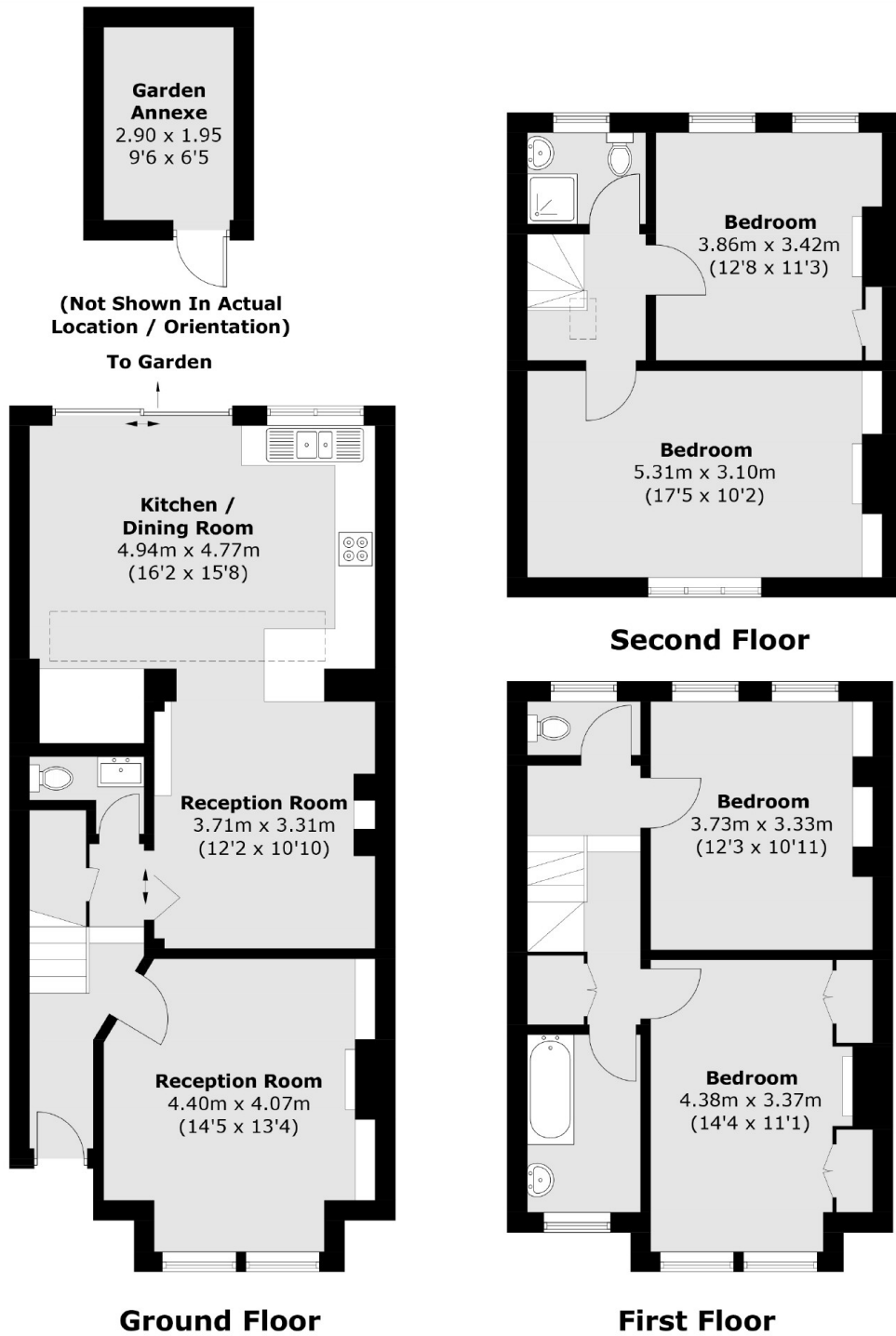








# Moring Road, London, SW17



Total area (approx.): 138.6 sq. m (1,491.9 sq. ft)  
Garden Annexe: 5.8 sq. m (62.4 sq. ft)