



## Wandle Road, SW17

£1,700 Per calendar month

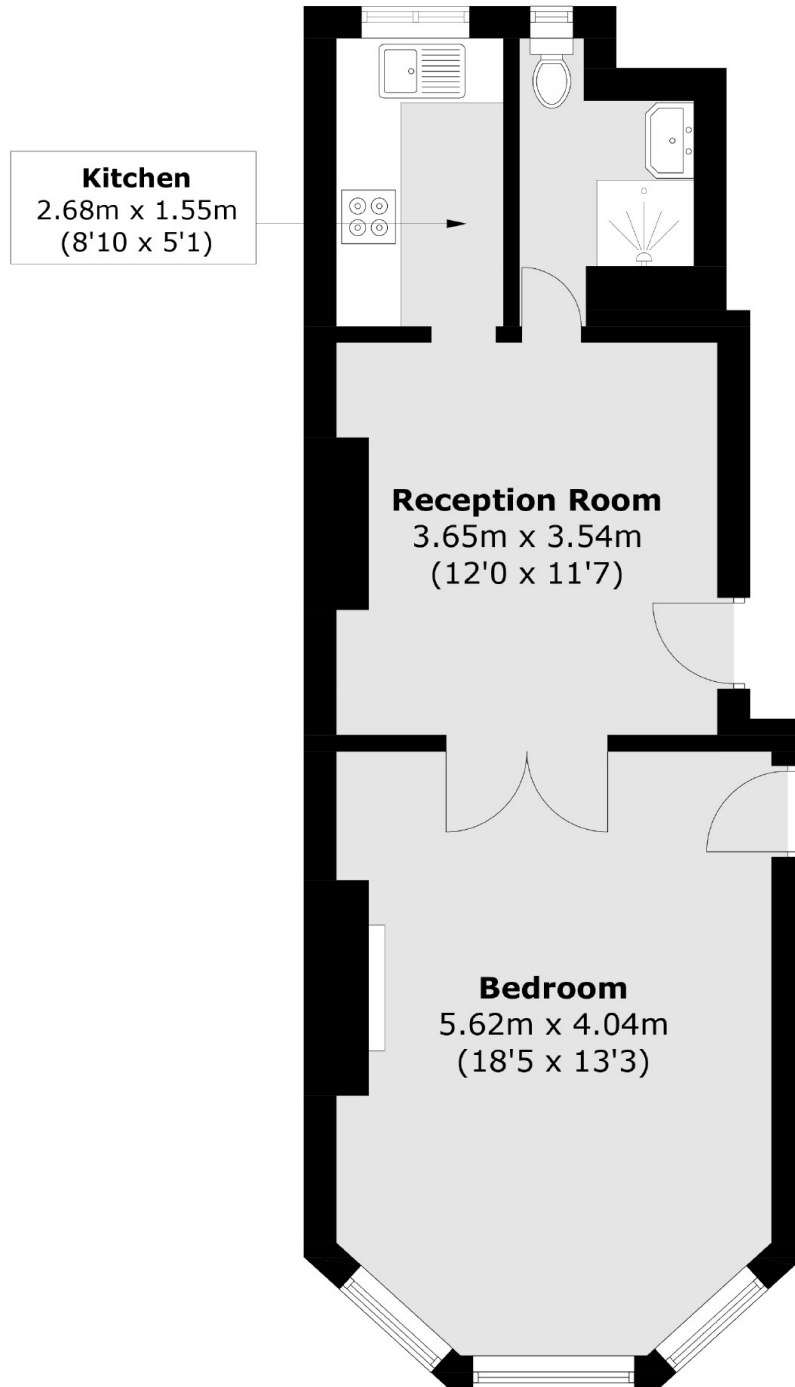
A ground floor flat situated on a popular residential road in Tooting. This property offers a spacious bedroom and an open plan kitchen/reception room with high ceilings. This property also benefits from a communal garden.

Wandle Road is beautiful tree lined residential street positioned moments away from Tooting Bec Underground station and the wide green open spaces of Wandsworth Common. The many shops, bars and restaurants of Bellevue Road and Balham and Tooting town centres are also nearby.

### Features

- Ground Floor Flat
- Spacious Bedroom
- Open Plan
- Neutral Decor
- Modern Bathroom
- Communal Garden

# Wandle Road, London, SW17



Total area (approx.): 43.3 sq. m (466.1 sq. ft)