



Thrale Road, SW16

£475,000

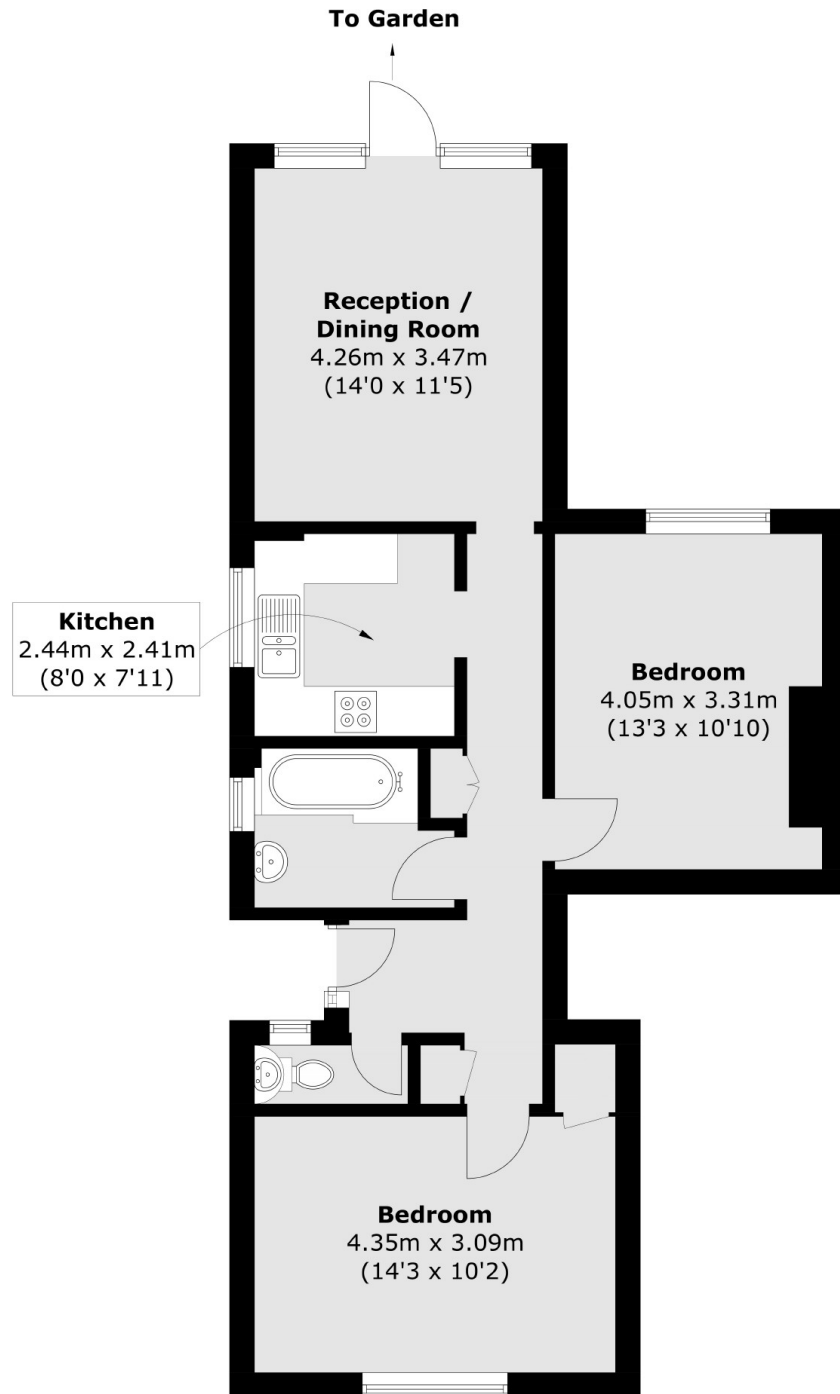
A stunning and truly rare two double bedroom ground floor maisonette retaining a stunning south facing garden and accommodation that extends to over 700 sqft. Opening onto a spacious rear reception room, the property comprises a separate kitchen, two double bedrooms, off-street parking and a three piece family bathroom. The property also retains a long lease.

Thrale Road is nestled away in the highly desirable Furzedown Village with the vast amenities, close knit community and shops and bars the area has to offer and with Tooting Bec Common a short walk away. Excellent transport links can be found via Tooting Bec or Tooting Broadway Underground and Streatham Overground stations.

Features

- Two Double Bedrooms
- Stunning Large Garden
- Furzedown Village
- Own Front Door
- Generous Living Space
- Off-Street Parking

Thrale Road, London, SW16



Total area (approx.): 65.9 sq. m (709.3 sq. ft)

Dexters

Tooting
48 Tooting High Street
London
SW17 0RG
Sales
020 8545 8582

Energy Rating: . We aim to make our particulars both accurate and reliable. However they are not guaranteed; nor do they form part of an offer or contract. If you require clarification on any points then please contact us, especially if you're traveling some distance to view. Please note that appliances and heating systems have not been tested and therefore no warranties can be given as to their good working order.

 **RICS** | Regulated
Estate Agent
and Letting Agent

[dexters.co.uk](https://www.dexters.co.uk)