



Thrale Road, SW16

£500,000

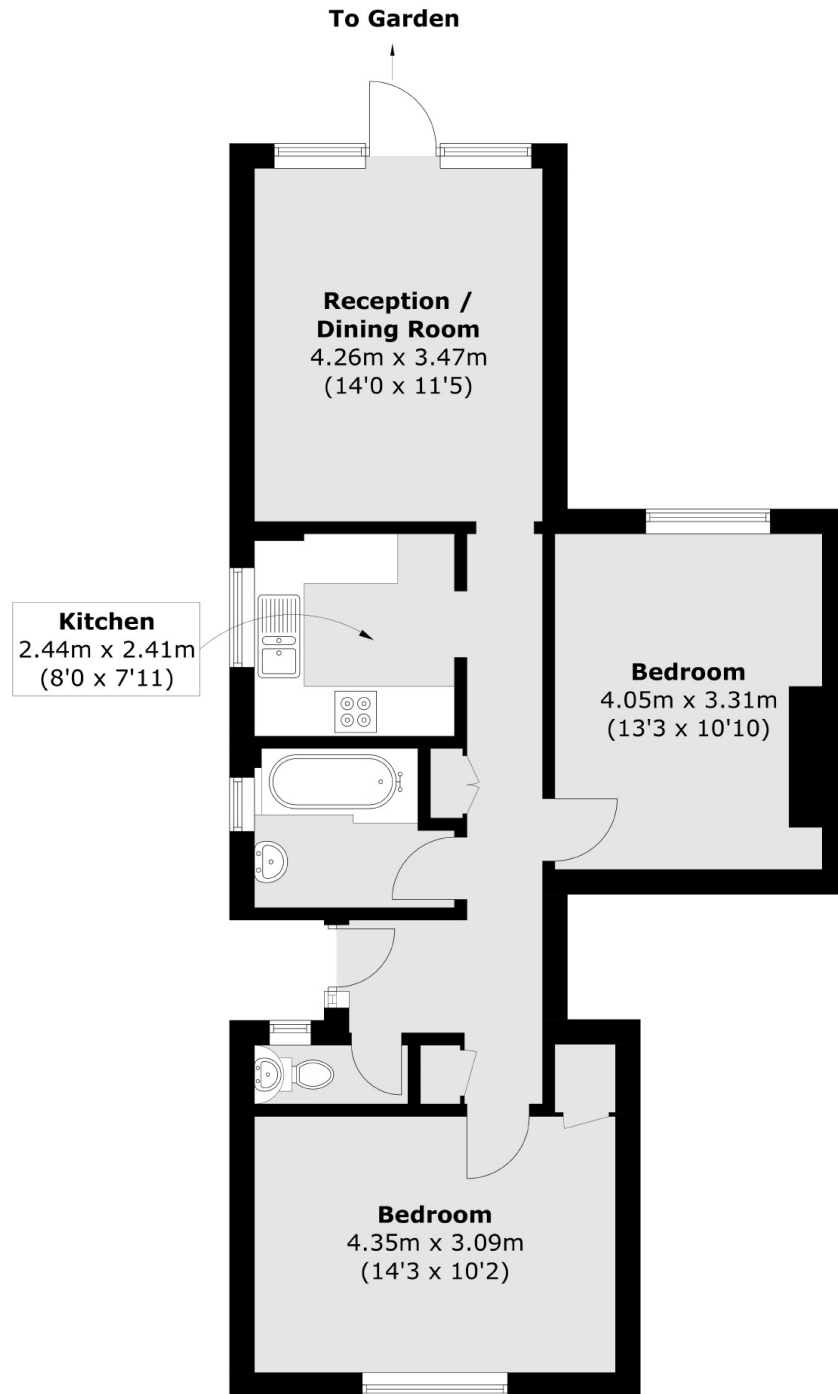
A stunning and truly rare two double bedroom ground floor maisonette retaining a stunning south facing garden and accommodation that extends to over 700 sqft. Opening onto a spacious rear reception room, the property comprises a separate kitchen, two double bedrooms, off-street parking and a three piece family bathroom. The property also retains a long lease.

Thrale Road is nestled away in the highly desirable Furzedown Village with the vast amenities, close knit community and shops and bars the area has to offer and with Tooting Bec Common a short walk away. Excellent transport links can be found via Tooting Bec or Tooting Broadway Underground and Streatham Overground stations.

Features

- Two Double Bedrooms
- Stunning Large Garden
- Furzedown Village
- Own Front Door
- Generous Living Space
- Off-Street Parking

Thrale Road, London, SW16



Total area (approx.): 65.9 sq. m (709.3 sq. ft)