



Trinity Road, SW17

£800,000

Dexters



Trinity Road, SW17

A beautifully presented three double bedroom apartment set over the raised ground floor of this handsome Victorian building with a private garden and exceptional accommodation throughout. The property opens onto a bright and airy open-plan kitchen/reception with a comfortable seating and dining area, with three generous double bedrooms and two bathrooms.

A beautifully presented three double bedroom apartment set over the raised ground floor of this handsome Victorian building with a private garden and exceptional accommodation throughout. The property opens onto a bright and airy open-plan kitchen/reception with a comfortable seating and dining area, with three generous double bedrooms and two bathrooms.

Located between Wandsworth Common Railway Station and Toting Bec Underground station (both a 5-minute walk), Trinity Road offers excellent convenience. Nearby Bellevue Road is lined with cafes, restaurants and brunch spots whilst Balham is also just a 10 minute walk. The green open space of Wandsworth Common is a short stroll in one direction and Tooting Bec is easily accessible in the other.

Features

- Three Double Bedrooms
- Two Bathrooms
- Private Garden
- Open-Plan Kitchen/Reception Room
- Desirable Location

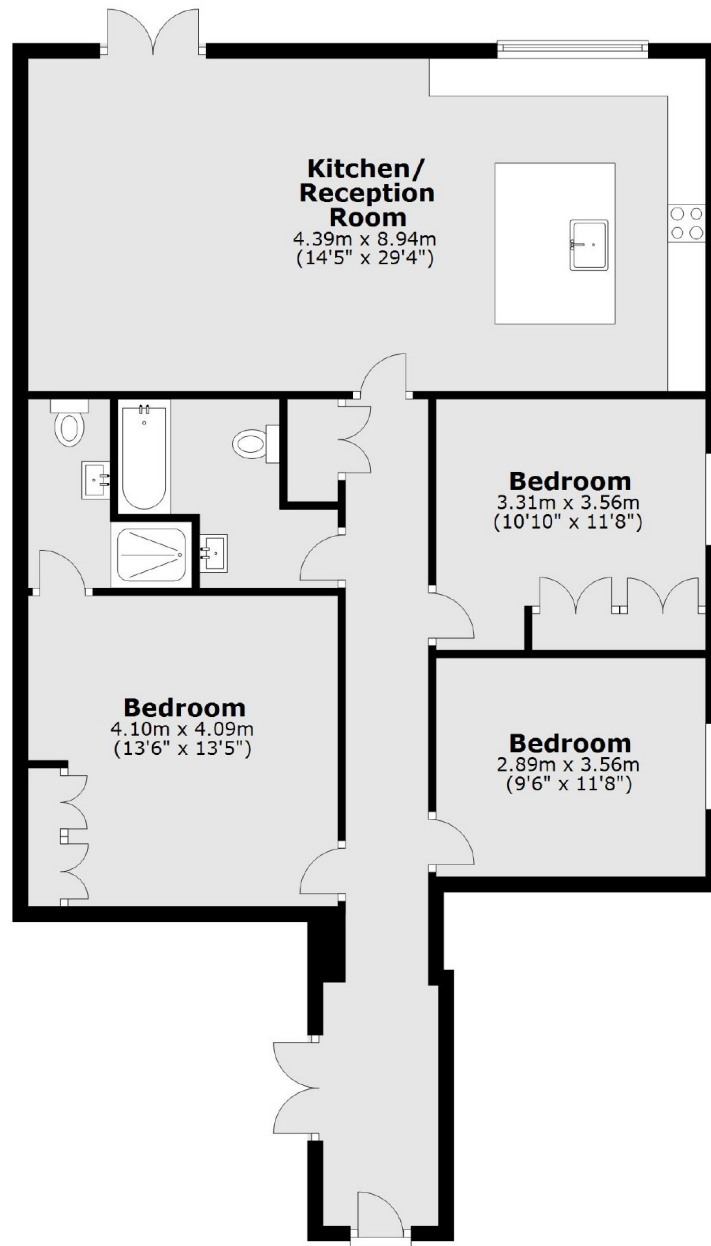






Trinity Road, London, SW17

Ground Floor



Total area: approx. 104.9 sq. metres (1129.0 sq. feet)