



London Road, CR4

£2,200 Per calendar month

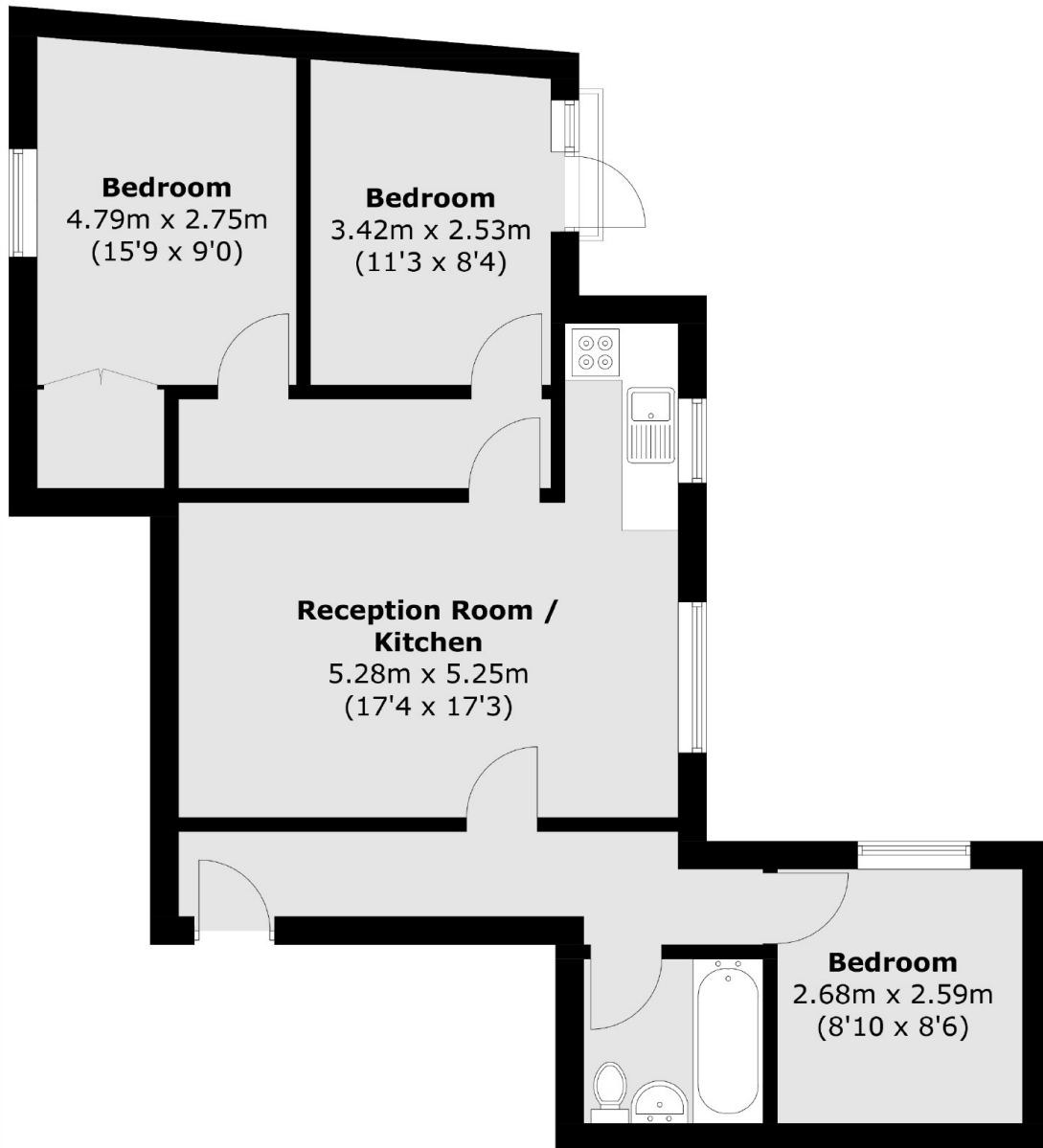
A spacious three double bedroom flat located in the heart of Mitcham Common. This property comprises of an open plan kitchen reception and one bathroom.

London Road is located in Mitcham with a vast array of shops, restaurants and amenities including Figges Marsh and Mitcham Common. With the superb transport links of Mitcham Eastfields tram and mainline station.

Features

- Three Double Bedrooms
- Open Plan
- Wooden Flooring
- Neutral Decor
- Ideal Location
- Mitcham Common

London Road, Mitcham, CR4



Total area (approx.): 63.7 sq. m (685.7 sq. ft)