



Moffat Road, SW17

£775,000

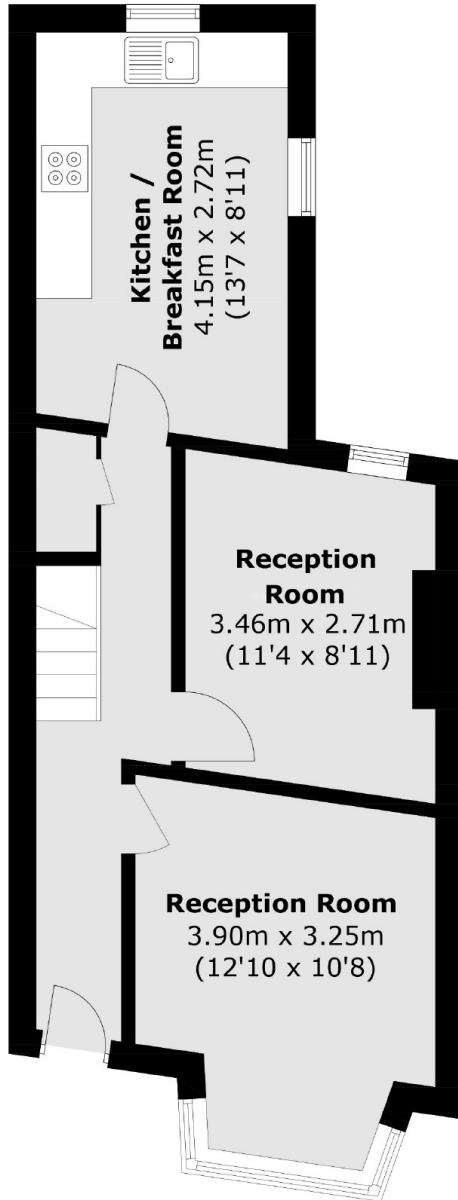
A charming and refurbished three bedroom freehold home in the heart of Tooting that has been lovingly maintained by the current owners. Accommodation includes three bedrooms, two reception rooms, a family bathroom and a generous south facing garden with ample scope for extending (STPP).

Moffat Road is enviably located moments from Tooting High Street with the many shops, bars, eateries of Tooting Market on the doorstep. The vast bus links and easy access to the City are also a short stroll away via Tooting Broadway Underground Station.

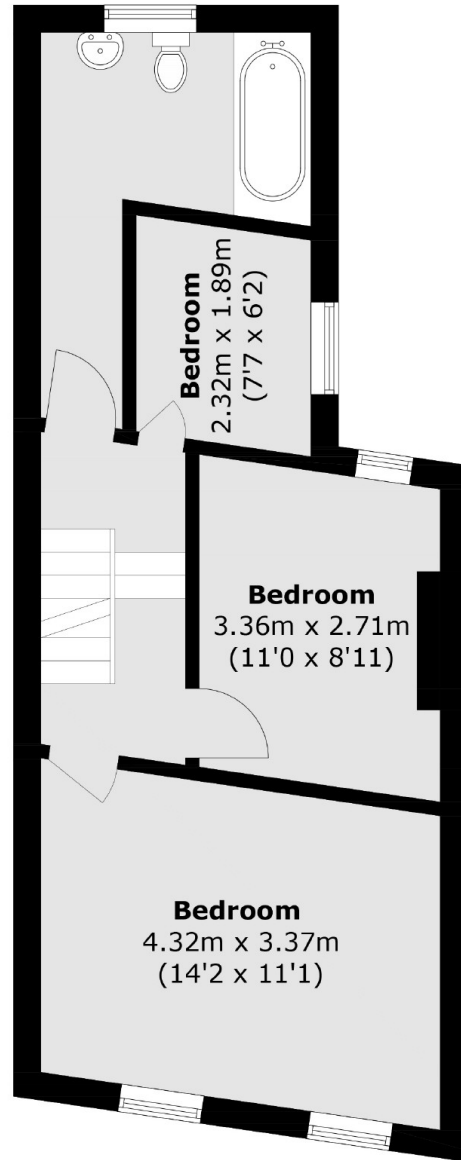
Features

- Three Double Bedrooms
- Chain Free
- Blank Canvas
- South Facing Garden
- Convenient Location
- Potential to Extend (STPP)

Moffat Road, London, SW17



Ground Floor



First Floor

Total area (approx.): 85.6 sq. m (921.4 sq. ft)