



## Recovery Street, SW17

£450,000

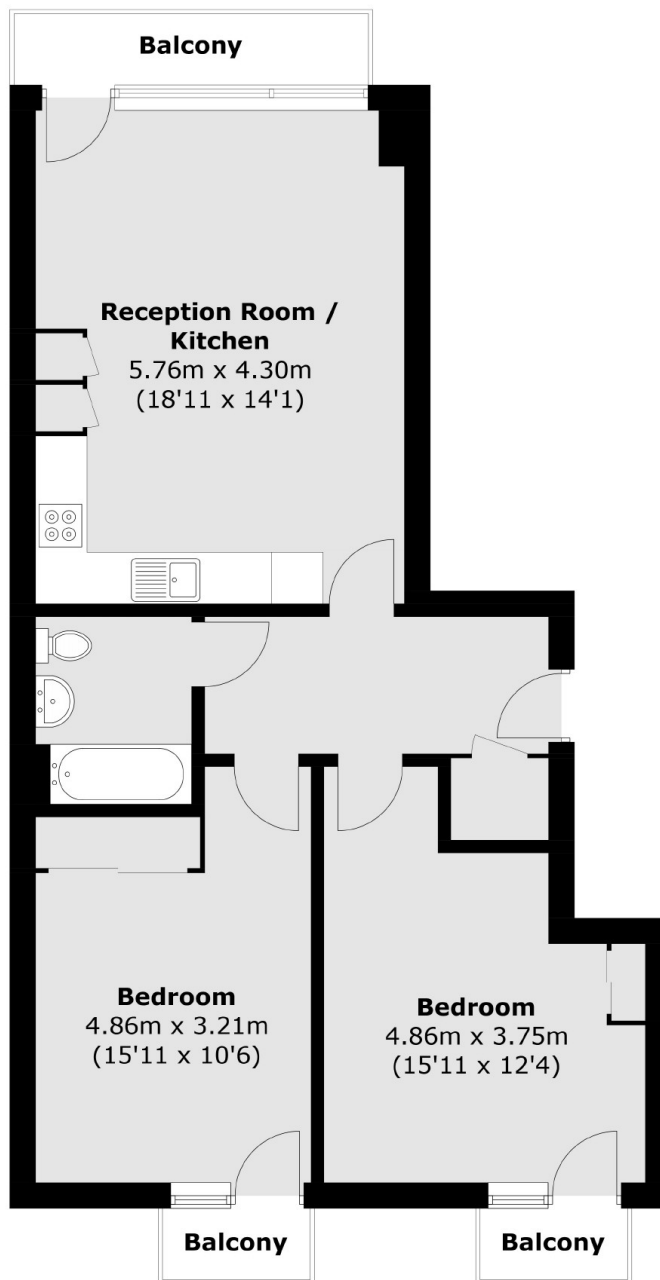
An impressive and stylish two double bedroom apartment set in the heart of Tooting with an abundance of light throughout and excellent proportions. Accommodation includes a superb open-plan kitchen/reception room with panoramic skyline views over Tooting and an integral kitchen, two double bedrooms and a three piece family bathroom. The property retains a communal roof terrace and three private balconies.

Located just off Tooting High Street, the property is enviably located on the doorstep of many boutique shops, bars and eclectic mix of eateries with the excellent transport links of Tooting Broadway station a short walk away.

### Features

- Two Double Bedrooms
- Three Balconies
- Long Lease
- Modern Apartment
- Open-Plan Kitchen
- Lift Access

# Recovery Street, London, SW17



Total area (approx.): 68.6 sq. m (738.4 sq. ft)  
Balcony: 6.3 sq. m (67.8 sq. ft)