



## Mortlake Drive, CR4

£575,000

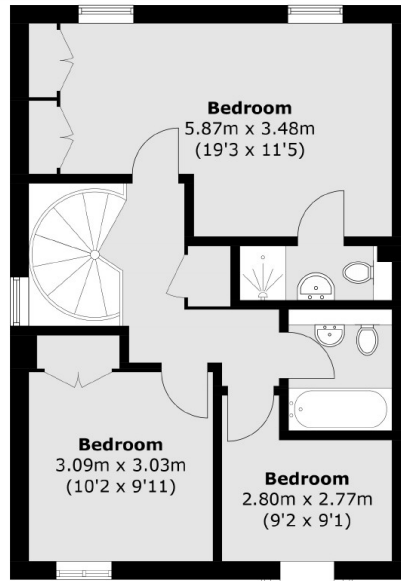
A rarely available end of terrace freehold home occupying a generous plot with off-street parking, a garage, large garden and three double bedrooms with two bathrooms. The property also retains a spacious reception room with ample space for dining and a generous kitchen with a downstairs w/c.

Mortlake Drive represents a close knit community of homes with great proximity to the vast amenities, shops and restaurants of Colliers Wood and Wimbledon town centres with Tooting also on the doorstep. Colliers Wood Underground station is also minutes walk away.

### Features

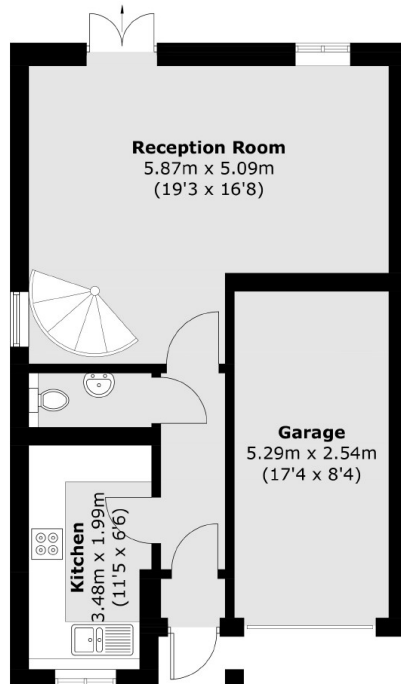
- Freehold Home
- Garage
- Off-Street Parking
- Three Bedrooms
- Town House
- Blank Canvas

# Mortlake Drive, Mitcham, CR4



**First Floor**

To Garden



**Ground Floor**

Total area (approx.): 107.8 sq. m (1,160.4 sq. ft)