



## Bickley Street, SW17

£3,500 Per calendar month

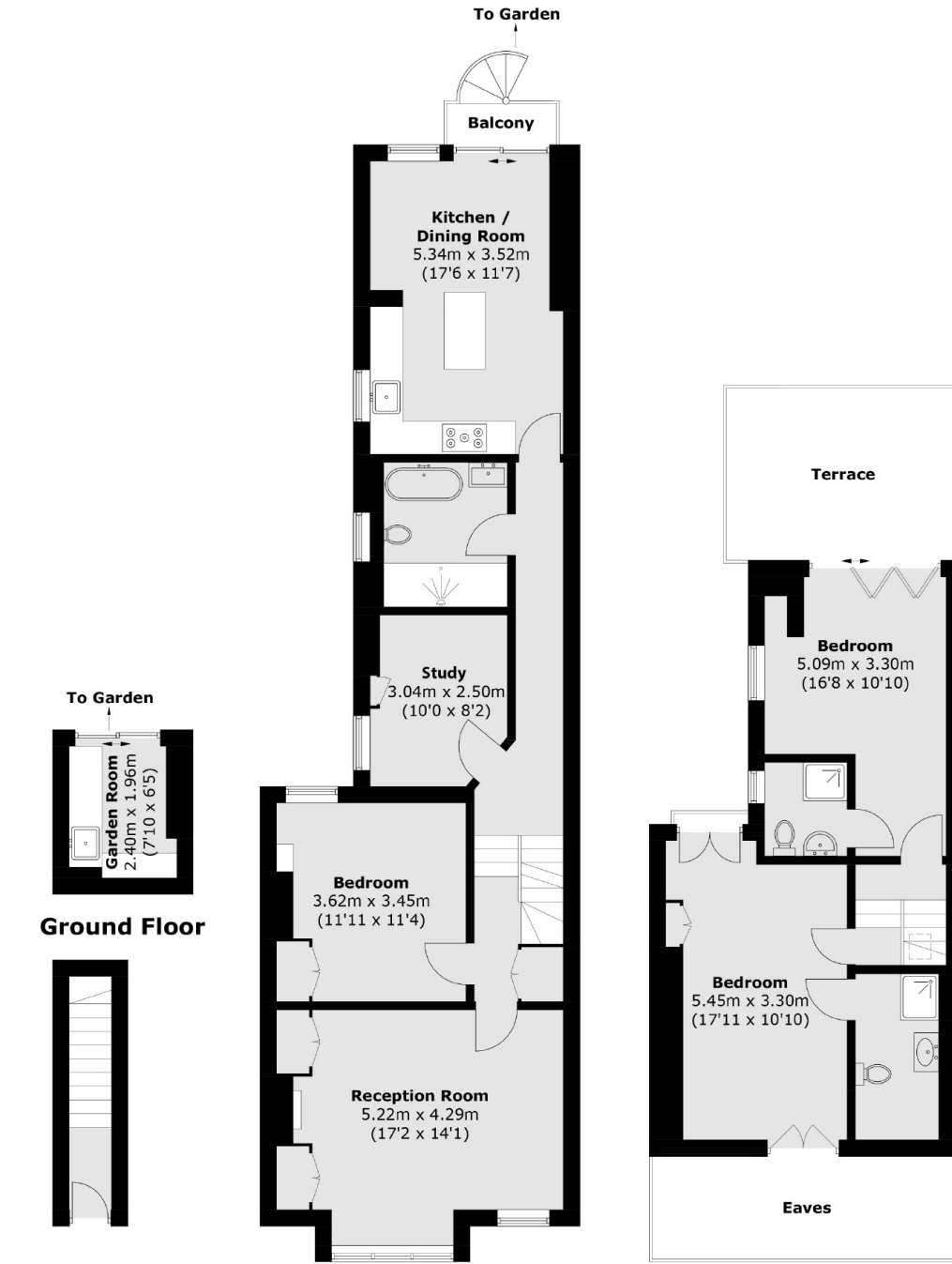
A stunning three double bedroom first and second floor property located in the middle of Tooting Broadway. The property benefits from three bathrooms, a private garden and additional roof terrace making it perfect for professional sharers or a couple.

Bickley Street is well located for the many shops, bars and restaurants of Central Tooting with Tooting Market only a short stroll away. The many transport links and access points for the City can be found via Tooting Broadway Underground and Tooting Railway stations.

### Features

- Three Double Bedrooms
- Three Bathrooms
- Eat In Kitchen
- Private Garden
- Private Roof Terrace
- Additional Study

# Bickley Street, London, SW17



**Ground Floor**

**First Floor**

**Second Floor**

Total area (approx.): 134.3 sq. m (1,445.5 sq. ft)  
(Excluding Eaves)

Terrace & Balcony area (approx.): 14.8 sq. m (159.3 sq. ft)