



## Hoyle Road, SW17

£2,000 Per calendar month

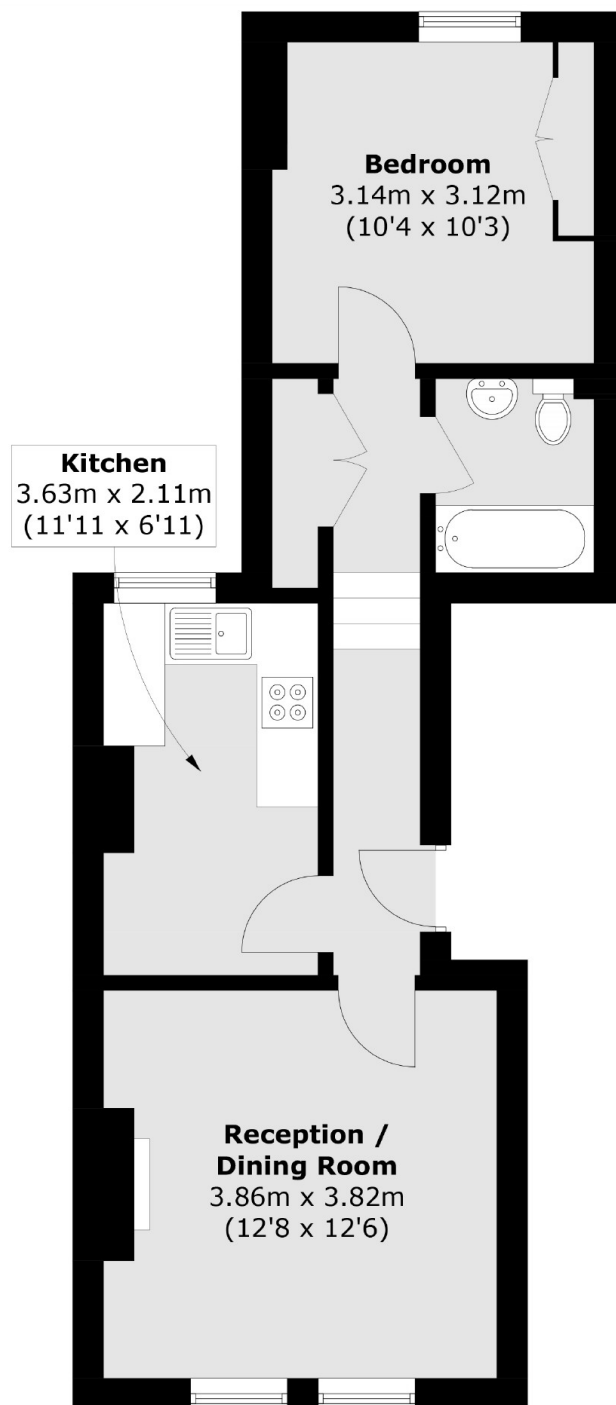
A spacious one double bedroom flat conveniently located a short walk from Tooting tube station. This property benefits from separate reception and kitchen, modern bathroom and a communal garden.

Hoyle Road is conveniently located for Tooting Broadway and it's variety of shops, bars and restaurants on the doorstep with excellent bus links and Tooting Broadway Underground station within walking distance.

### Features

- Ground Floor Flat
- One Double Bedroom
- Separate Reception
- Modern Bathroom
- Communal Garden
- Wandsworth Borough

# Hoyle Road, London, SW17



Total area (approx.): 43.3 sq. m (466.0 sq. ft)