



Heaton Road, CR4

£795,000

Dexters



Heaton Road, CR4

A stunning family home that has undergone extensive refurbishment to the highest degree, with accommodation spanning over two floors and retains exceptional detail throughout with three bedrooms and a large south facing garden.

Welcomed by a handsome exterior the house greets you into a spacious hallway and leads onto a comfortable double reception room that has been thoughtfully furnished with solid wooden floors, original fireplace, period features, plantation shutters and bespoke cabinetry. The heart of the home lies at the rear with a stunning and stylish fitted kitchen balanced with wall and base units, integrated appliances, solid worktops, a breakfast island and a practical utility room. Bi folding doors provide great access onto a landscaped south facing garden.

Over the first floor, the property is proportionately laid out to include three bedrooms, furnished with built-in wardrobes and a stylish three piece family bathroom. There is also further extension potential via the loft (STPP).

Heaton Road is conveniently located for the many shops, bars and restaurants of central Tooting with both Tooting Railway and Tooting Broadway Underground stations within walking distance.

Features

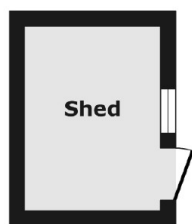
- Three Bedrooms
- South Facing Garden
- Newly Refurbished Home
- Stylish Integrated Kitchen
- Period Features
- Potential To Extend (STPP)



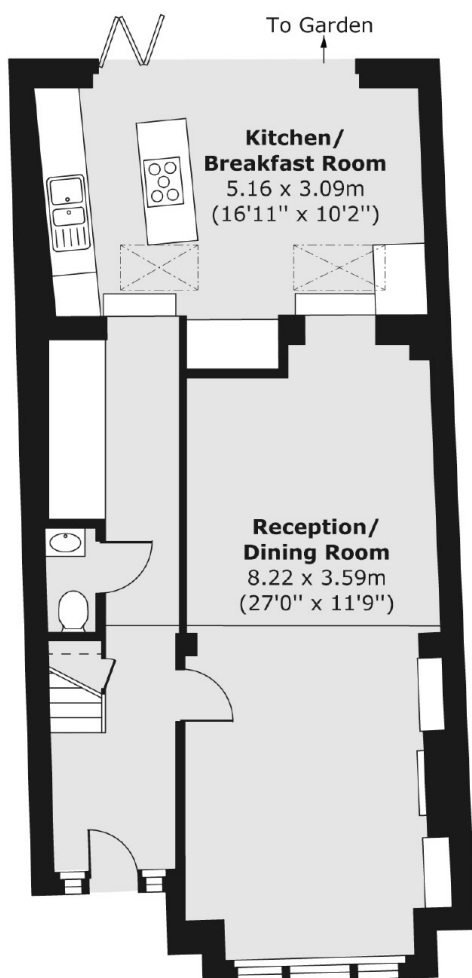




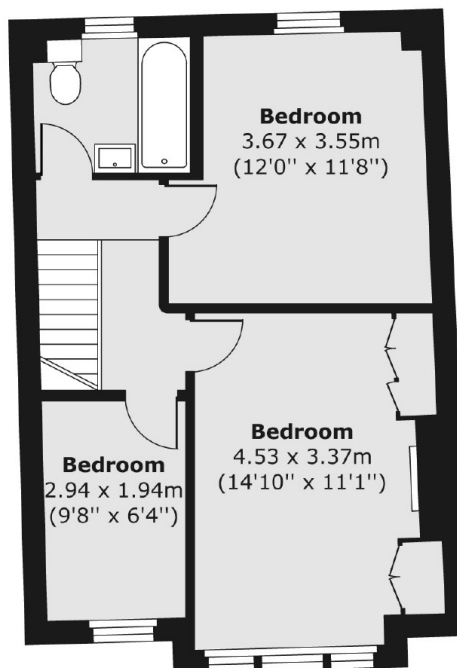
Heaton Road, Mitcham, CR4



Ground Floor



First Floor



Total area (approx.) 101.24 sq. m (1,090 sq. ft)
Shed area (approx.) 4.54 sq. m (49 sq. ft)