



Beclands Road, SW17

£725,000

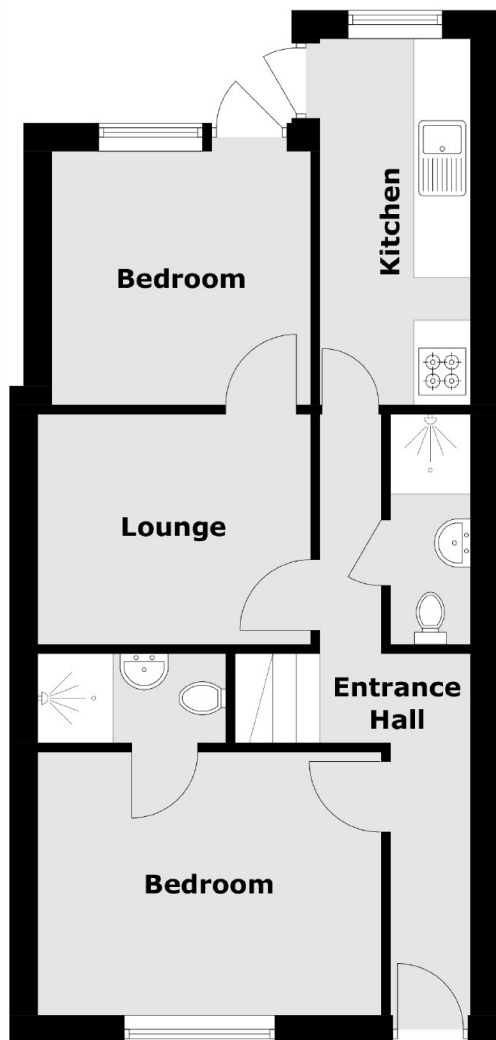
An impressive freehold home having been lovingly maintained by the current owners with five generous double bedrooms, four bathrooms, separate reception room and newly renovated kitchen. The property retains a generous garden plot with scope for further extending (STPP). A current rental income of £3,850 PCM is being achieved.

Beclands Road represents a close knit community of freehold homes within Furzedown and on the doorstep of central Tooting with it's many shops, bars and amenities within walking distance. The property benefits from Graveney School catchment and frequent bus links and Tooting Broadway Underground Station are nearby.

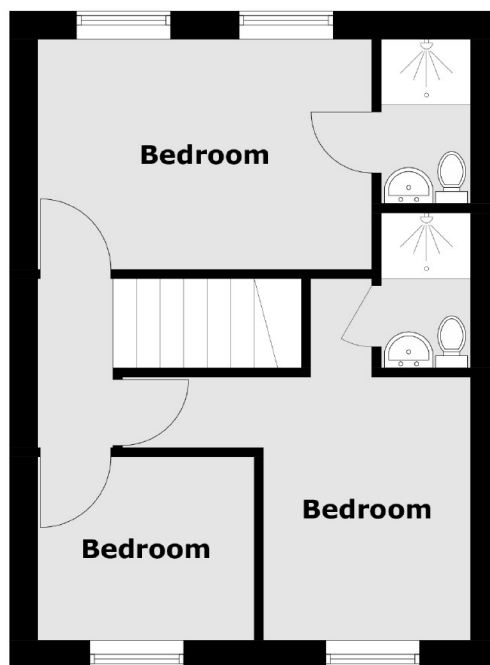
Features

- Five Bedrooms
- Four Bathrooms
- Large Garden
- Furzedown Village
- Rental Income of £3,850 PCM
- Desirable Location

Beclands Road, London, SW17



Ground Floor



First Floor