



Bickersteth Road, SW17

£765,000

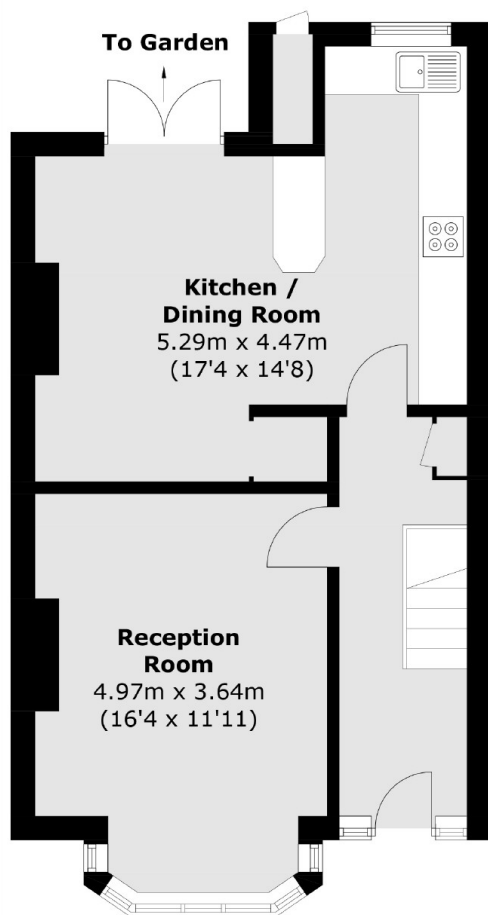
A charming freehold home set in the heart of Tooting with an abundance of scope and potential for extending & alterations STPP with a larger than average garden. This accommodation spans just under 1,100sqft and includes three bedrooms, a spacious front reception room and an open plan kitchen/dining room.

Bickersteth Road is a highly desirable residential road located in central Tooting with a vast array of shops, bars and restaurants on the doorstep, with the transport links of Tooting Railway Thames Link Overground and Tooting Broadway Tube stations within walking distance.

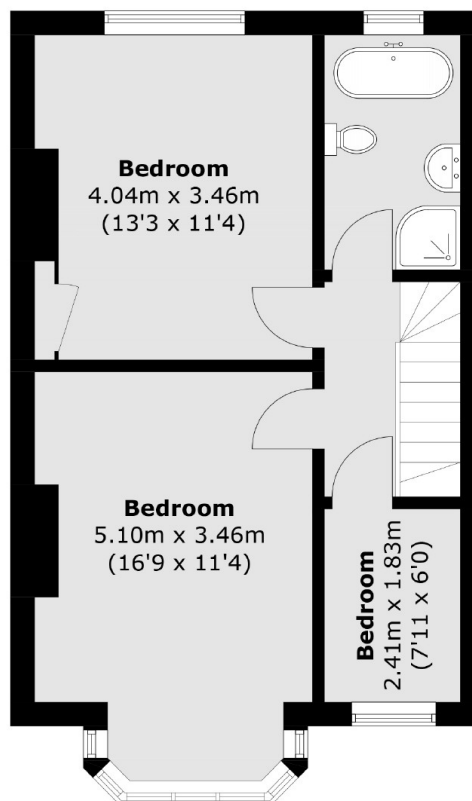
Features

- Three Bedrooms
- Large Garden
- Potential to Extend (STPP)
- Blank Canvas
- Freehold Home
- Just Under 1,100 sqft

Bickersteth Road, London, SW17



Ground Floor



First Floor

Total area (approx.): 95.4 sq. m (1,026.9 sq. ft)
External Cupboard: 0.7 sq. m (7.5 sq. ft)