



## Trinity Road, SW17

£635,000

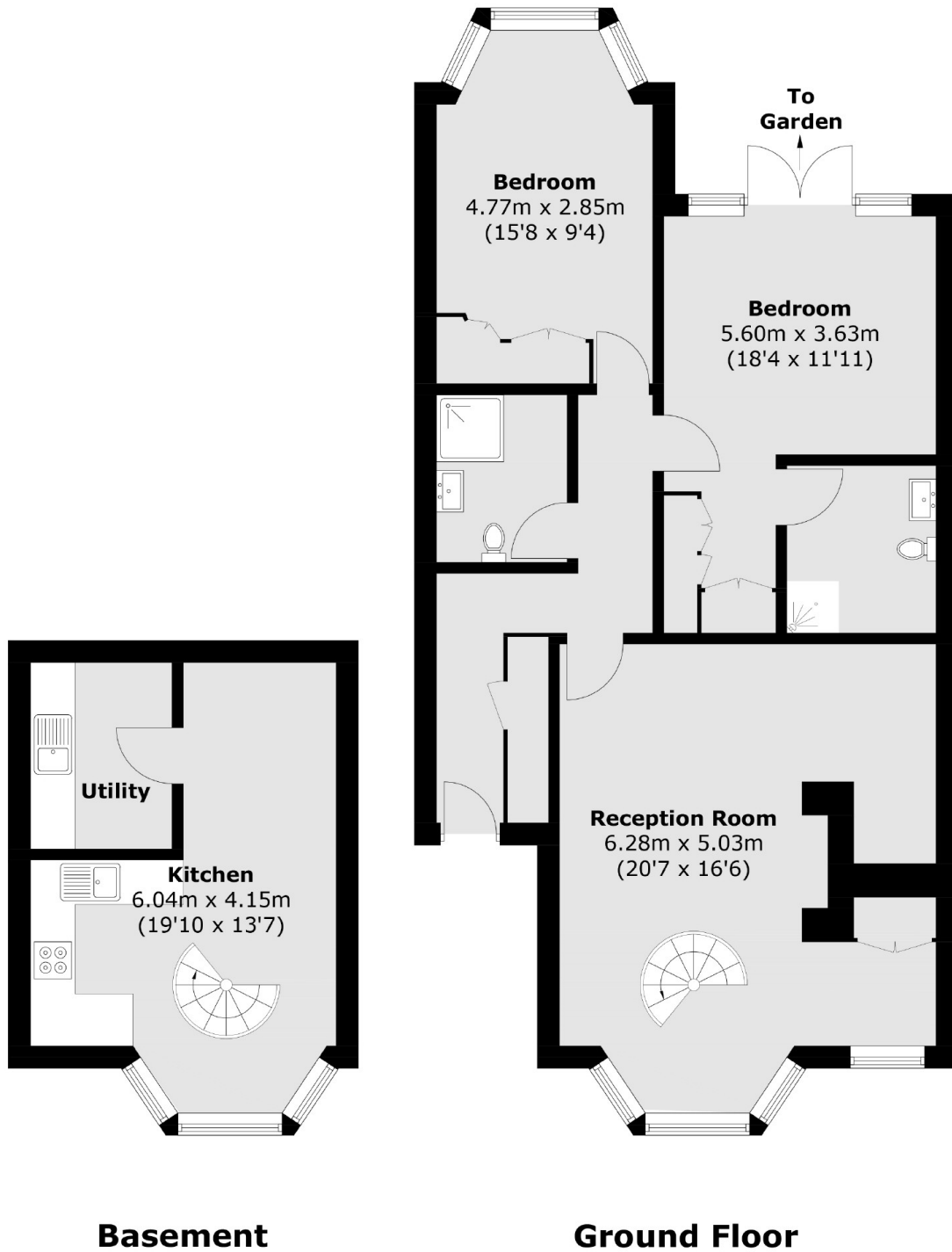
A charming and larger than average split level two double bedroom apartment set over the ground and lower ground floor of this handsome Victorian building with a footprint that spans over 1000 sqft, positioned moments away from Wandsworth Common and Balham town centre. Accommodation comprises a large reception room with stairs leading to an eat-in kitchen with a utility room, two double bedrooms and two bathrooms with direct access onto a private rear garden.

Trinity Road is eviably positione moments away from Tooting Bec Underground station and the vast green open spaces of Wandsworth Common. The many shops, bars and restaurants of Bellevue Road and Balham and Tooting town centres are also nearby.

### Features

- Two Bedrooms
- Split Level
- Two Bathrooms
- Private Garden
- Share of Freehold
- Chain Free

# Trinity Road, London, SW17



Total area (approx.): 101.1 sq. m (1,088.2 sq. ft)