



Woodland Way, CR4

£300,000

OFFERS IN EXCESS OF

An impressive and newly converted one double bedroom split level apartment with over 600 sqft of superb accommodation benefitting from it's own front door, a stunning open-plan kitchen reception room, a large double bedroom and a stylish family bathroom.

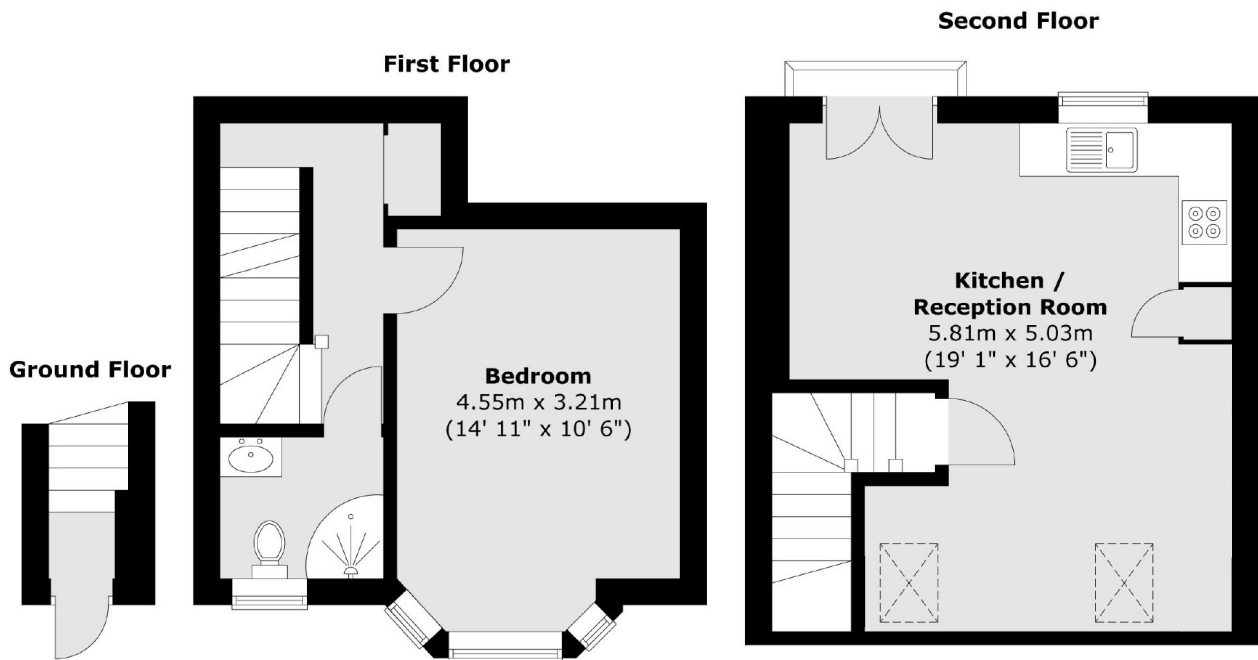
Woodland Way is a quiet residential road conveniently located for the many shops, bars and restaurants of central Tooting with the excellent transport links of Tooting Railway within walking distance and Tooting Broadway Underground stations also nearby.

Features

OIEO

- One Double Bedroom
- Share of Freehold
- Open-Plan Kitchen/Reception
- Split Level
- Stylish Apartment
- Own Front Door

Woodland Way, Mitcham, CR4



Total area (approx.) : 56 sq. m (603 sq. ft)