



Boscombe Road, SW17

£850,000

Dexters



Boscombe Road, SW17

A truly exquisite mid terrace freehold home that has undergone extensive refurbishment throughout to create an unrivalled living experience with an open-plan kitchen reception room at the rear, a generous garden, three bedrooms all the while retaining a front reception room.

Having meticulously been refurbished to the highest degree, the property wonderfully welcomes you in via spacious entrance way with marble style tiles and leads to a spacious front reception room that is beautifully complimented by bespoke cabinetry, solid wooden floors and plantation shutters.

The heart of the home lies at the rear with a stunning fitted kitchen being the focal point. Furnished with wall and base units, a breakfast island, integrated appliances and solid worktops, there is ample space of dining and entertaining with bi-folding doors opening onto a landscaped rear garden. The ground floor further benefits from understair storage and a cloakroom w/c. Over the first floor, there are three bedrooms and a stylish three piece family bathroom.

Boscombe Road represents a close knit community of freehold homes set on the ABC roads with excellent proximity to the many shops, bars and restaurants of central Tooting and Furzedown Village, with convenient transport links and outstanding schools within walking distance.

Features

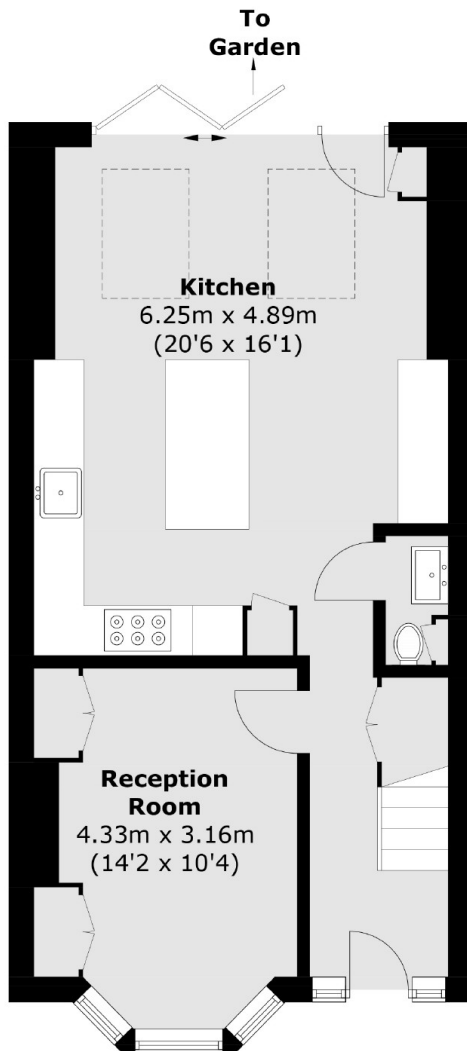
- Beautiful Condition
- Further Scope to Extend (STPP)
- Bespoke Fitted Kitchen
- ABC Roads
- Bi-Folding Doors
- Landscaped Garden



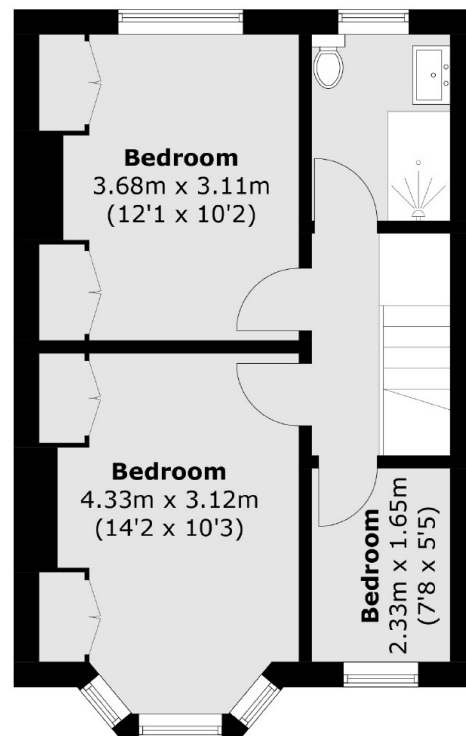




Boscombe Road, London, SW17



Ground Floor



First Floor

Total area (approx.): 88.1 sq. m (948.3 sq. ft)