



St. Peter's Close, SW17

£275,000

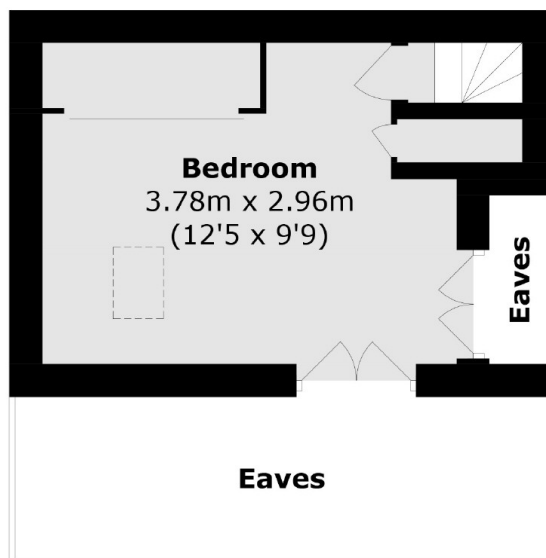
A split level one double bedroom apartment offering great scope for alterations and improvement to any incoming purchaser. The property benefits from off-street parking.

St. Peter's Close represents an intimate development of homes located moments away from Tooting Bec with the many shops and amenities of Tooting and Balham town centres within walking distance. Excellent transport links of Tooting Bec Tube station are also nearby.

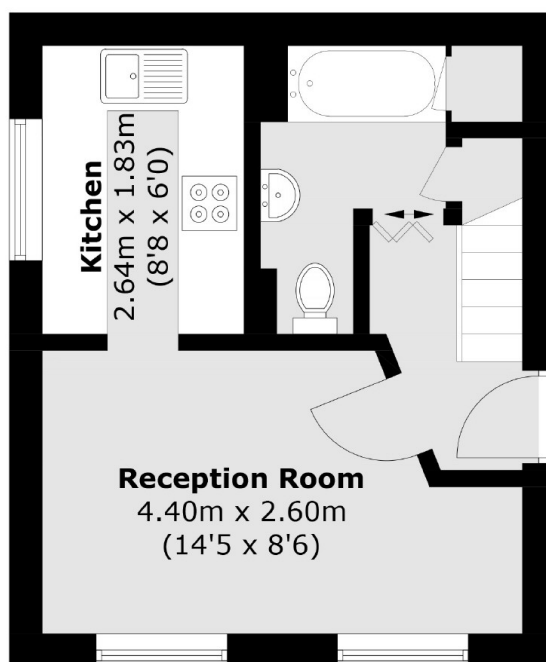
Features

- One Double Bedroom
- Split Level
- Chain Free
- Parking
- Desirable Location
- Blank Canvas

St. Peter's Close, London, SW17



Floor 2



Floor 1

Total area (approx.): 36.1 sq. m (388.5 sq. ft)
(Excluding Eaves)