



Himley Road, SW17

£550,000

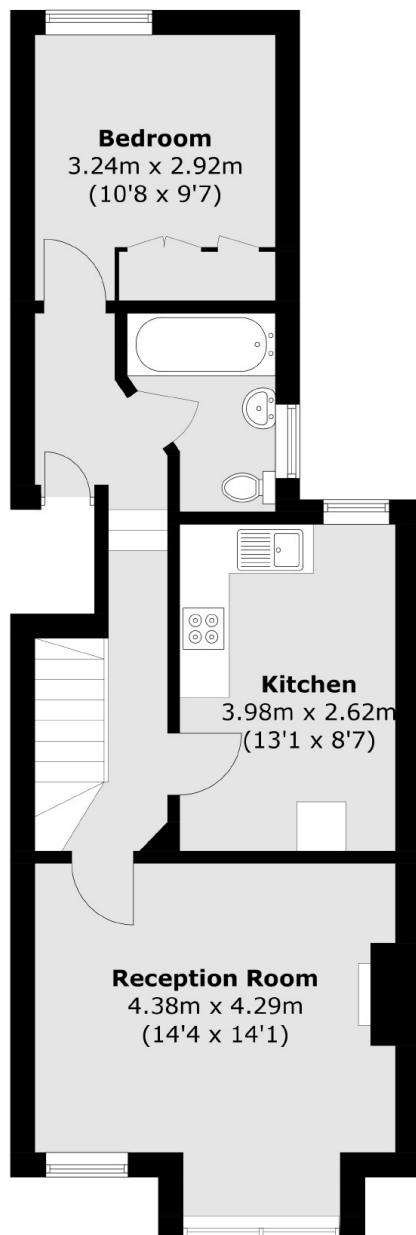
A charming period apartment set over the first floor and second floor of this handsome Victorian building with great accommodation throughout. The property retains three bedrooms, a large reception room, eat-in kitchen and two bathroom, with further scope to extend (STPP).

Himley Road is at heart of the Graveney grid with excellent access to the vast shops, restaurants and amenities of central Tooting and it's excellent transport of Tooting Broadway Tube station only walking distance away. Ofsted outstanding schools are also within a short walk away.

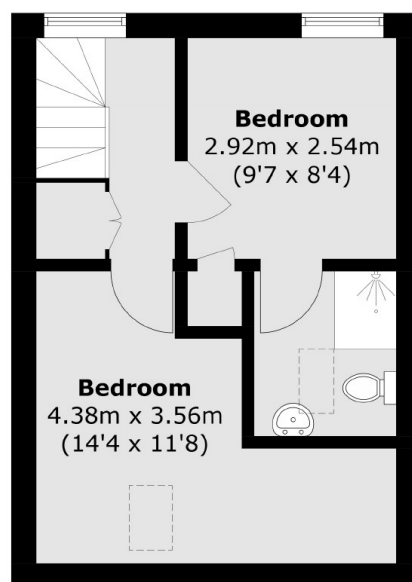
Features

- Three Bedrooms
- Two Bathrooms
- Split Level
- Period Building
- Desirable Location
- Potential to Extend (STPP)
- Chain Free

Himley Road, London, SW17



First Floor



Second Floor

Total area (approx.): 78.8 sq. m (848.2 sq. ft)