



Crowborough Road, SW17

£1,000,000

Dexters



Crowborough Road, SW17

An exemplary and fully extended four bedroom freehold home that has been lovingly refurbished, spanning over three floors with a private garden, open plan kitchen/dining room, utility room and four double bedrooms.

Holding a larger than average plot with rear access to a landscaped garden, the property opens onto a beautifully balanced ground floor which retains a spacious front reception room, a utility room with a w/c and a stunning open-plan kitchen/dining room to the rear with a fitted kitchen, integrated appliances and breakfast island with bifolding doors opening onto the garden.

Over the first and top floor, the property has three spacious double bedrooms with a three piece family bathroom and a principal bedrooms with an en-suite occupying the top floor.

Crowborough Road is a tree lined residential street on the doorstep of Furzedown with it's many shops and boutiques nearby. Tooting Broadway Underground and Tooting Railway stations are also within walking distance with excellent proximity to Ofsted outstanding Graveney School.

Features

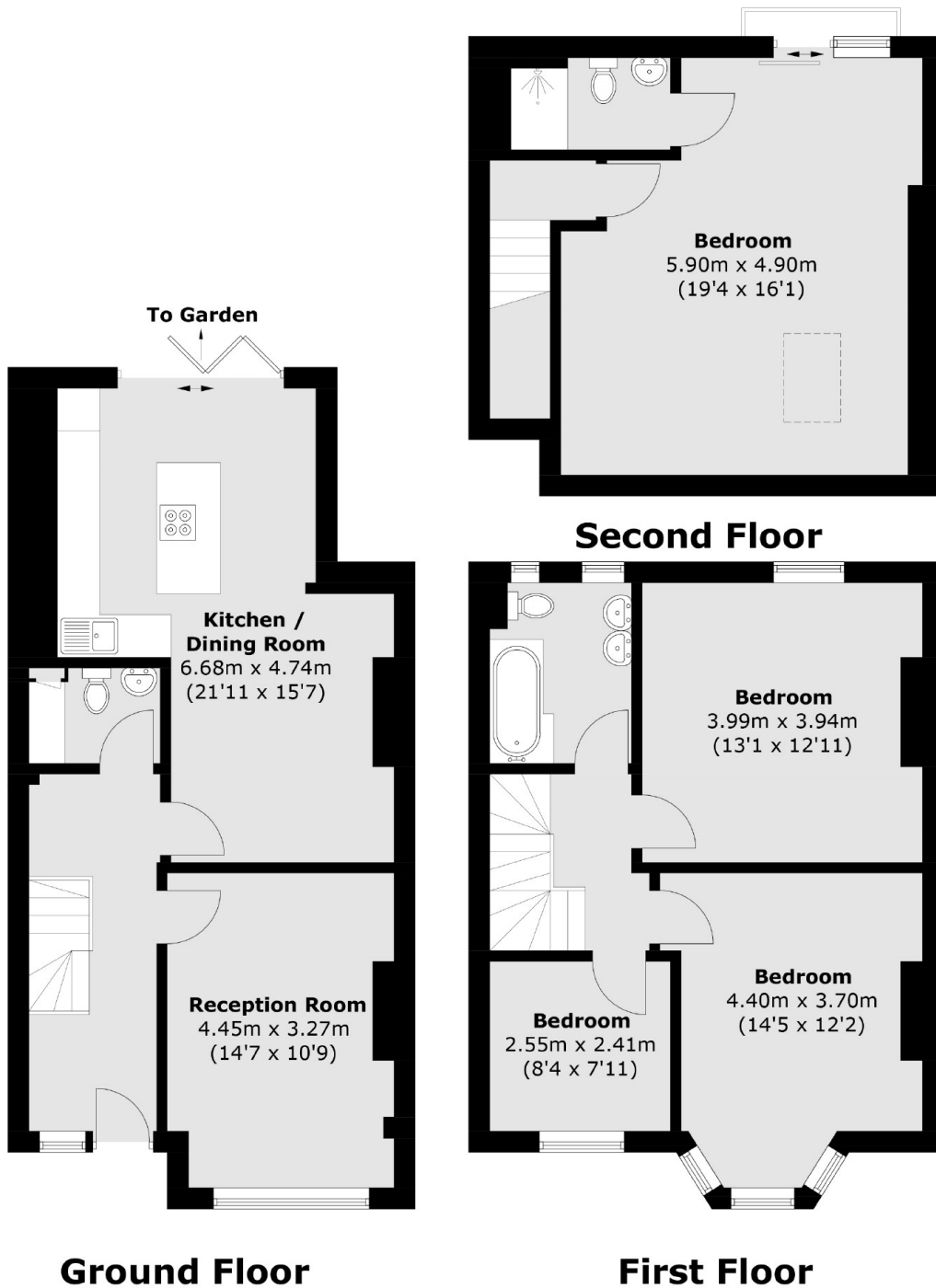
- Four Bedrooms
- Two Bathrooms
- Furzedown Village
- Private Garden
- Rear Access/Side Access
- Open-Plan Kitchen/Reception







Crowborough Road, London, SW17



Total area (approx.): 135.5 sq. m (1,458.5 sq. ft)