



Hepdon Mews, SW17

£750,000

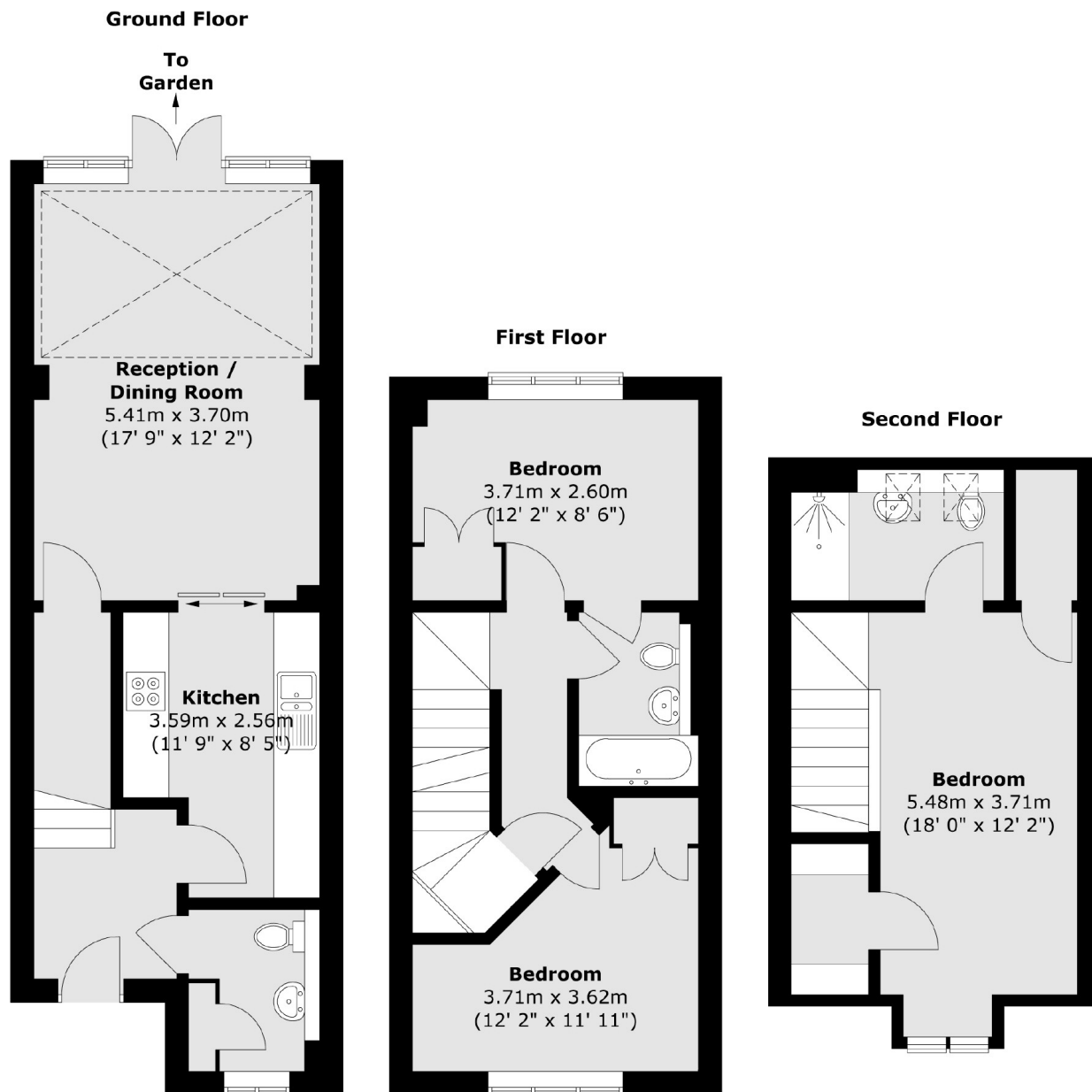
A superb three bedroom town house in the heart of Tooting positioned in a private gated development with off-street parking, south facing garden, three bedrooms and two bathrooms. The property retains a large stylish kitchen, with a spacious dining/reception room at the rear and is sold chain free.

Positioned just off Fountain Road, Hepdon Mews represents a close knit community of homes moments away from central Tooting with the vast shops, bars and vibrant market it has to offer on the doorstep. Excellent transport links are also nearby with Tooting Underground station moments walk away.

Features

- Three Bedrooms
- Two Bathrooms
- Chain Free
- Off-Street Parking
- Private Development
- Large Kitchen/Living Area

Hepdon Mews, London, SW17



Total area (approx.) : 98.6 sq. m (1061 sq. ft)