



Gilbey Road, SW17

£555,000

OFFERS IN EXCESS OF

A beautifully presented and well arranged two double bedroom ground floor garden flat occupying a generous plot moments away from central Tooting with an open-plan kitchen reception room, two double bedrooms and a sizeable garden.

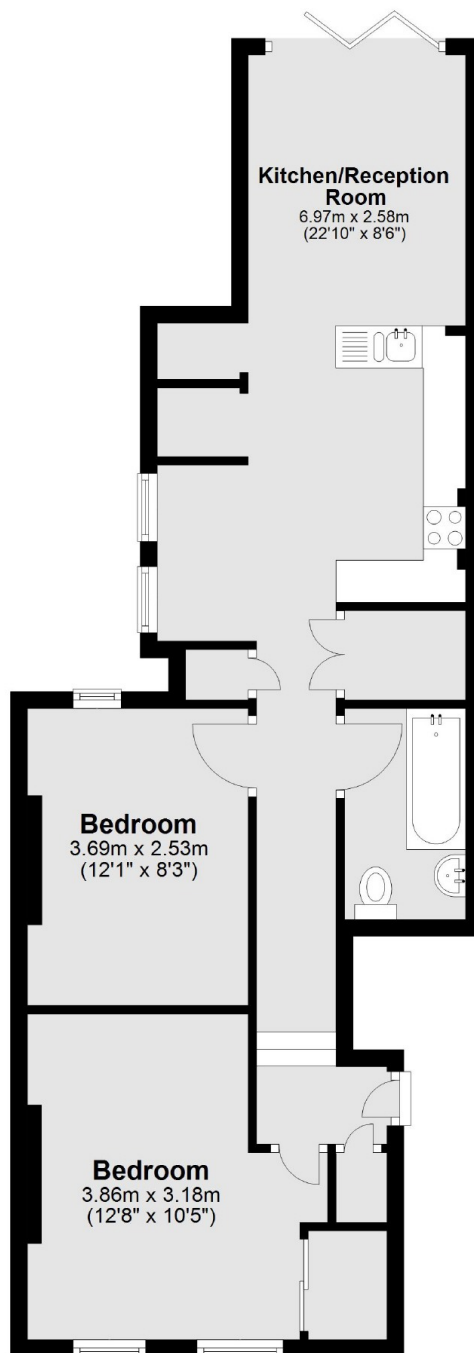
Gilbey Road is a sought after residential road in the heart of Tooting with it's many shops, bars and restaurants on the doorstep, with Tooting Broadway Underground and Tooting Railway stations also a short stroll away.

Features

OFFERS IN EXCESS OF

- Two Double Bedrooms
- Garden
- Bi-Folding Doors
- Excellent Condition
- Open-Plan Kitchen/Reception Room
- Desirable Location

Gilbey Road, London, SW17



Total area: approx. 57.9 sq. metres (623.0 sq. feet)