



## Woodland Way, CR4

£525,000

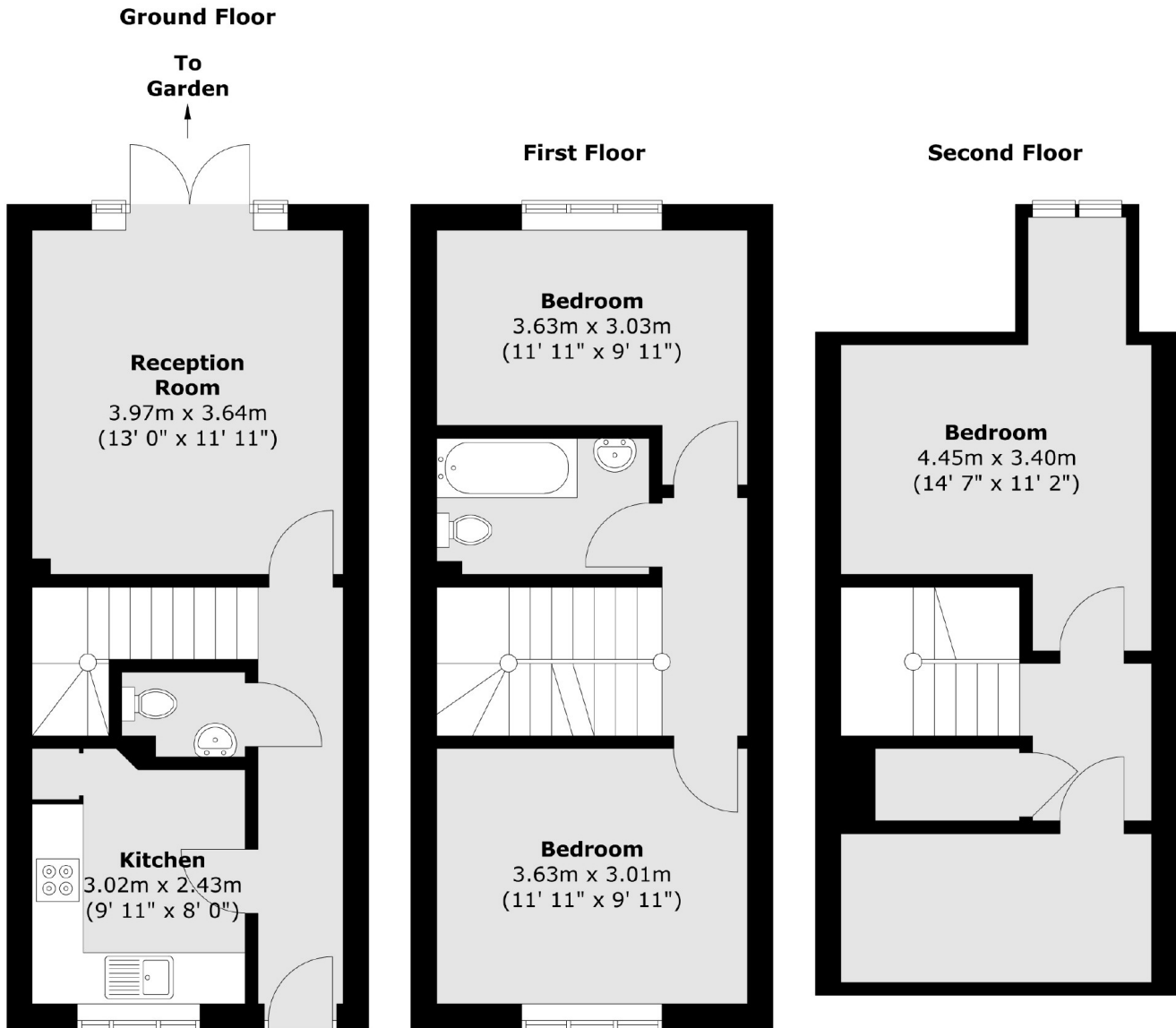
A stylish and thoughtfully presented three double bedroom house extending over 1000 sqft of superb living accommodation split over three floors. The property opens onto a stylish and contemporary kitchen, separate reception room with comfortable seating/dining area with direct access onto a private garden. Over the first floor, the property offers two bedrooms and a three piece family bathroom, second floor offers an additional bedroom and apple storage with further potential.

Woodland Way is a quiet residential road conveniently located for the many shops, bars and restaurants of central Tooting with the excellent transport links of Tooting Railway within walking distance and Tooting Broadway Underground stations also nearby.

### Features

Three Bedrooms  
Family Bathroom  
Freehold House  
Private Front & Rear Garden  
Split Over Three Floors  
Over 1000SQFT

# Woodland Way, Mitcham, CR4



Total area (approx.) : 96 sq. m (1033 sq. ft)