



## Rostella Road, SW17

£2,900 Per calendar month

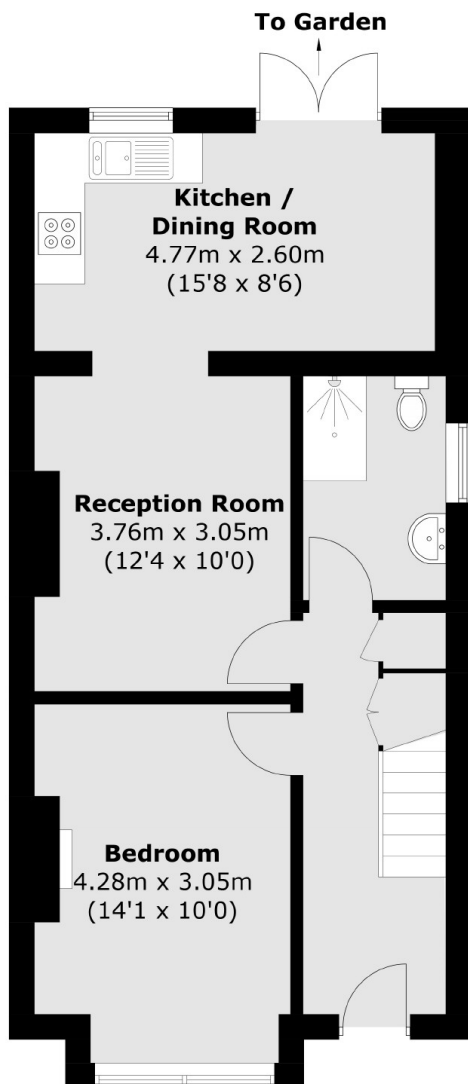
A three double bedroom Victorian house, refurbished throughout and has two bathrooms, an eat-in kitchen and a private rear garden with both a patio area and grass.

The property is a short distance from St Georges Hospital and allows easy access to the local shops, restaurants and cafés of Tooting Broadway.

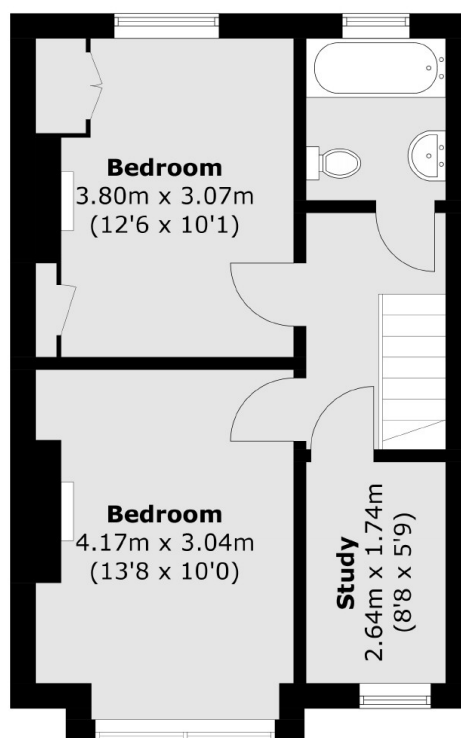
### Features

Victorian House  
Eat-in Kitchen  
Additional Study  
Private Garden  
Two Bathrooms  
Neutral Decor

# Rostella Road, London, SW17



**Ground Floor**



**First Floor**

Total area (approx.): 91.3 sq. m (982.7 sq. ft)