



Salterford Road, SW17

£765,000

An impressive and larger than average three bedroom maisonette with excellent proportions extending to approx 1,429 sqft comprising a stunning double width reception room, three bedrooms, a four piece family bathroom, a private garden and a superb kitchen.

Salterford Road is a quiet residential street on the doorstep of Furzedown Village with excellent access to the many shops, bars and restaurants of central Tooting and it's convenient transport links into the City.

Features

- Three Bedrooms
- Share of Freehold
- Private Garden
- Split Level
- Front Reception Room
- Furzedown Village



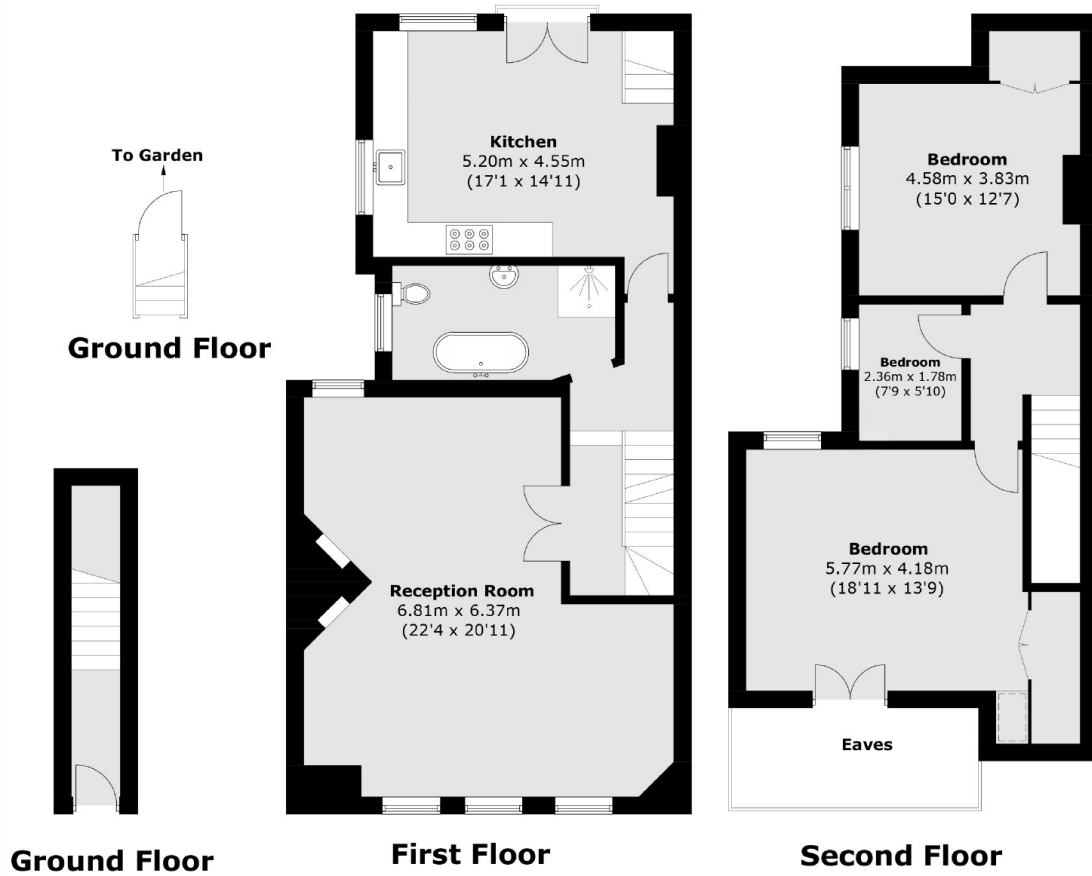
Salterford Road, SW17

Retaining a generous footprint and original features throughout, this stunning maisonette benefits from its own front door and opens onto a spacious and well arranged kitchen with a vast array of wall and base units, a comfortable dining area and steps leading to a private landscaped garden. Over the first floor, the property is beautifully balanced with the focal point being an unmatched front reception room, making for a comfortable seating and dining area, with ample workspace and a stunning exposed brick chimney stack.

Over the top floors, there are three generous double bedrooms with the principal bedroom furnished with an abundance of storage.



Salterford Road, London, SW17



Total area (approx.): 132.8 sq. m (1,429.4 sq. ft)
(Excluding Eaves)