



Inglemere Road, CR4

£3,500 Per calendar month

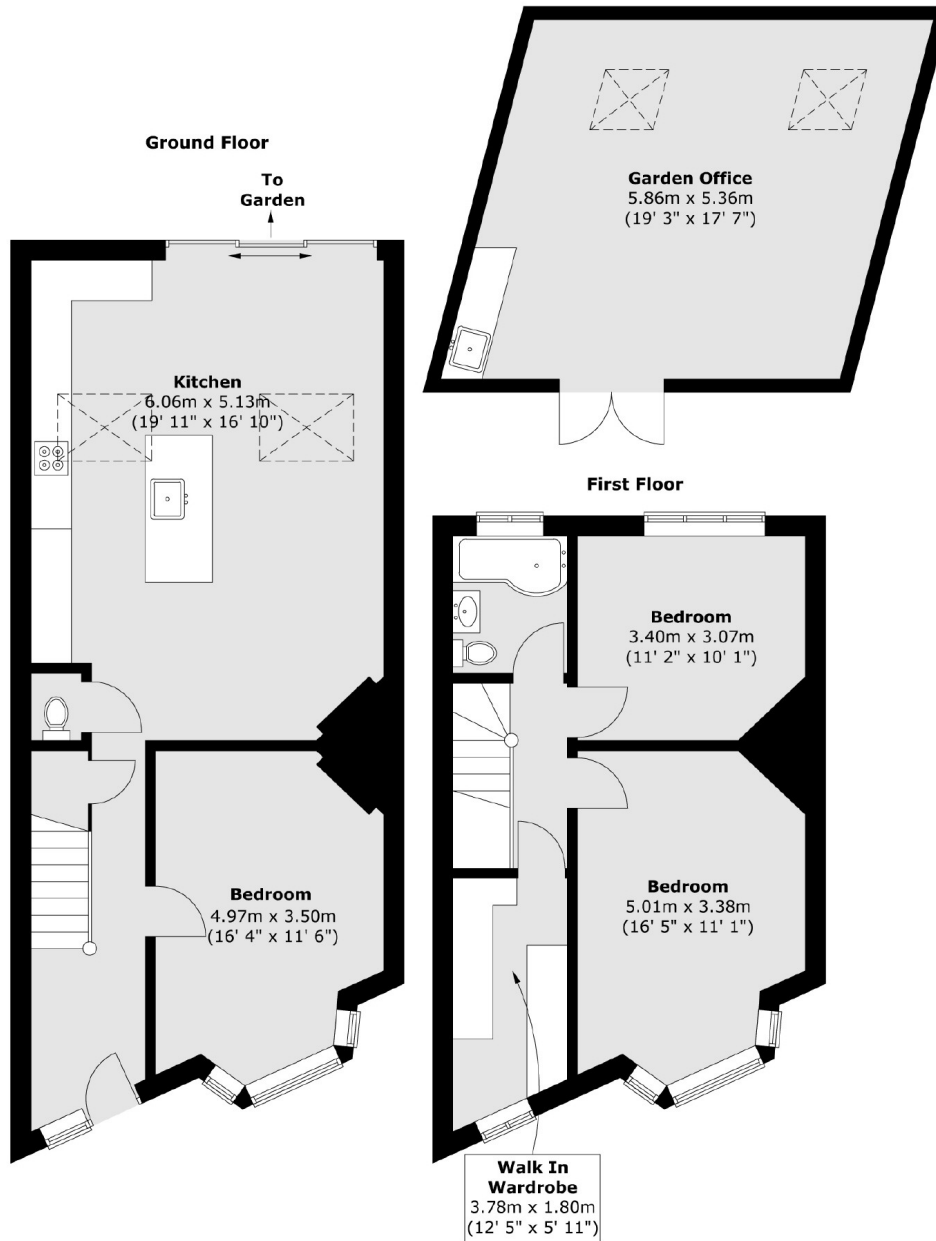
This three bedroom terraced house has been decorated to a high standard throughout. The open plan kitchen living area and additional large garden studio make it perfect for professional sharers or a family looking for extra space.

Inglemere Road is centrally located for the many shops, bars and restaurants of central Tooting with Tooting Railway station on the doorstep and Tooting Broadway Underground station also within walking distance. The green open spaces of Figges Marsh are a stones throw away.

Features

- Three Bedrooms
- Walk in Wardrobe
- Open Plan Kitchen/Living room
- Garden Studio
- Large Private Garden
- Hot Tub

Inglemere Road, Mitcham, CR4



Total area (approx.) : 105.5 sq. m (1136 sq. ft)
Total garden office area (approx.) : 31.8 sq. m (342 sq. ft)