



Garratt Terrace, SW17

£350,000

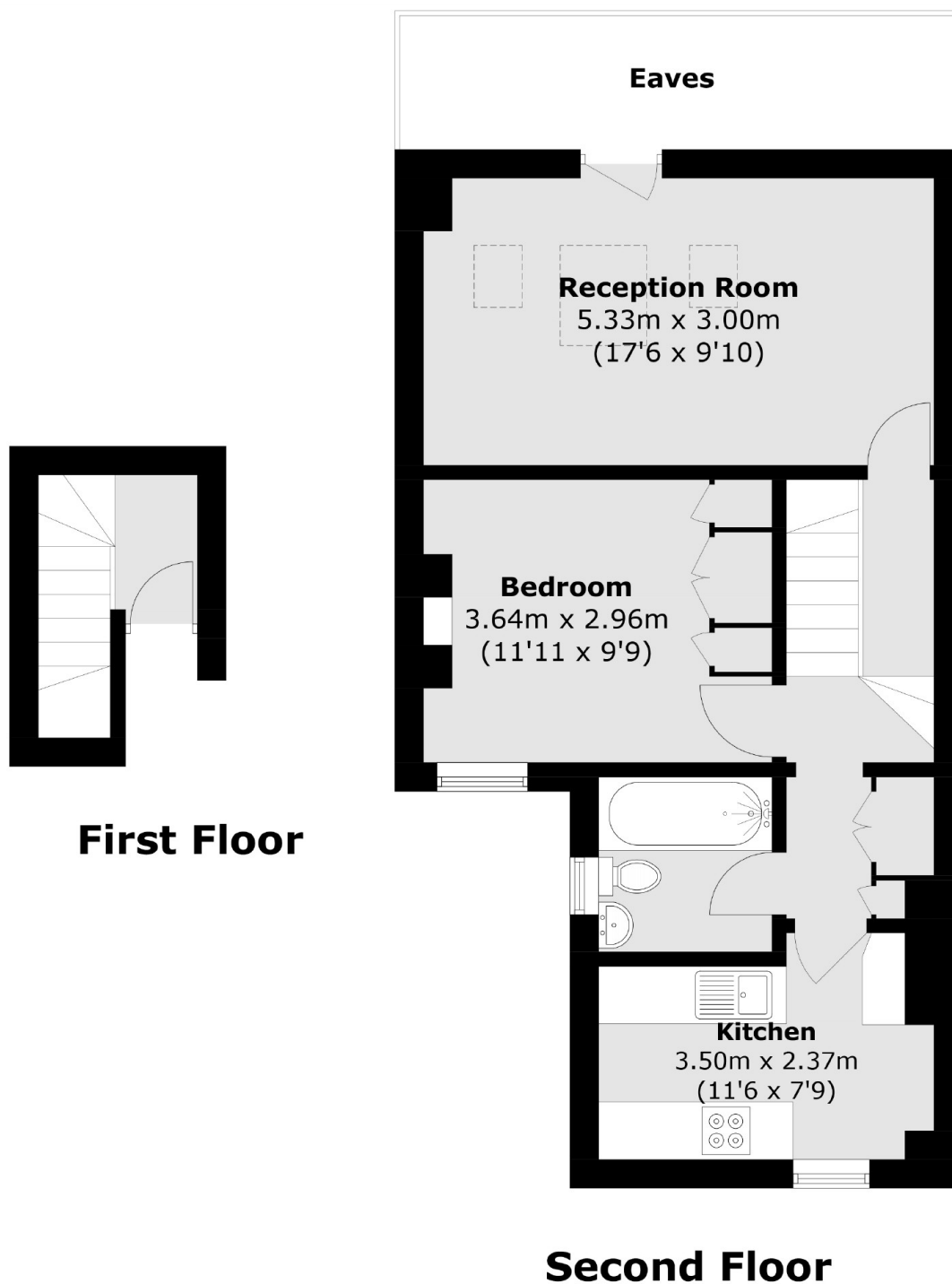
A charming, bright and well presented, one bedroom split-level apartment occupying a generous footprint over the top floor of this handsome Victorian house. The property retains a spacious front reception room, a sizeable kitchen, a large double bedroom with built-in wardrobes, a spacious hallway with built-in cupboards, a three piece bathroom and double glazed throughout.

Garratt Terrace is an enclave of highly desirable homes and apartments with excellent proximity to shops, bars, restaurants and the desirable Tooting Market. Excellent transport links are also on the doorstep with Tooting Broadway Underground and many bus links a short walk away.

Features

- One Double Bedroom
- Victorian Conversion
- Top Floor Apartment
- Desirable Location
- Large Apartment
- Tooting Broadway

Garratt Terrace, London, SW17



Total area (approx.): 50.6 sq. m (544.7 sq. ft)
(Excluding Eaves)