



## Garratt Terrace, SW17

£365,000

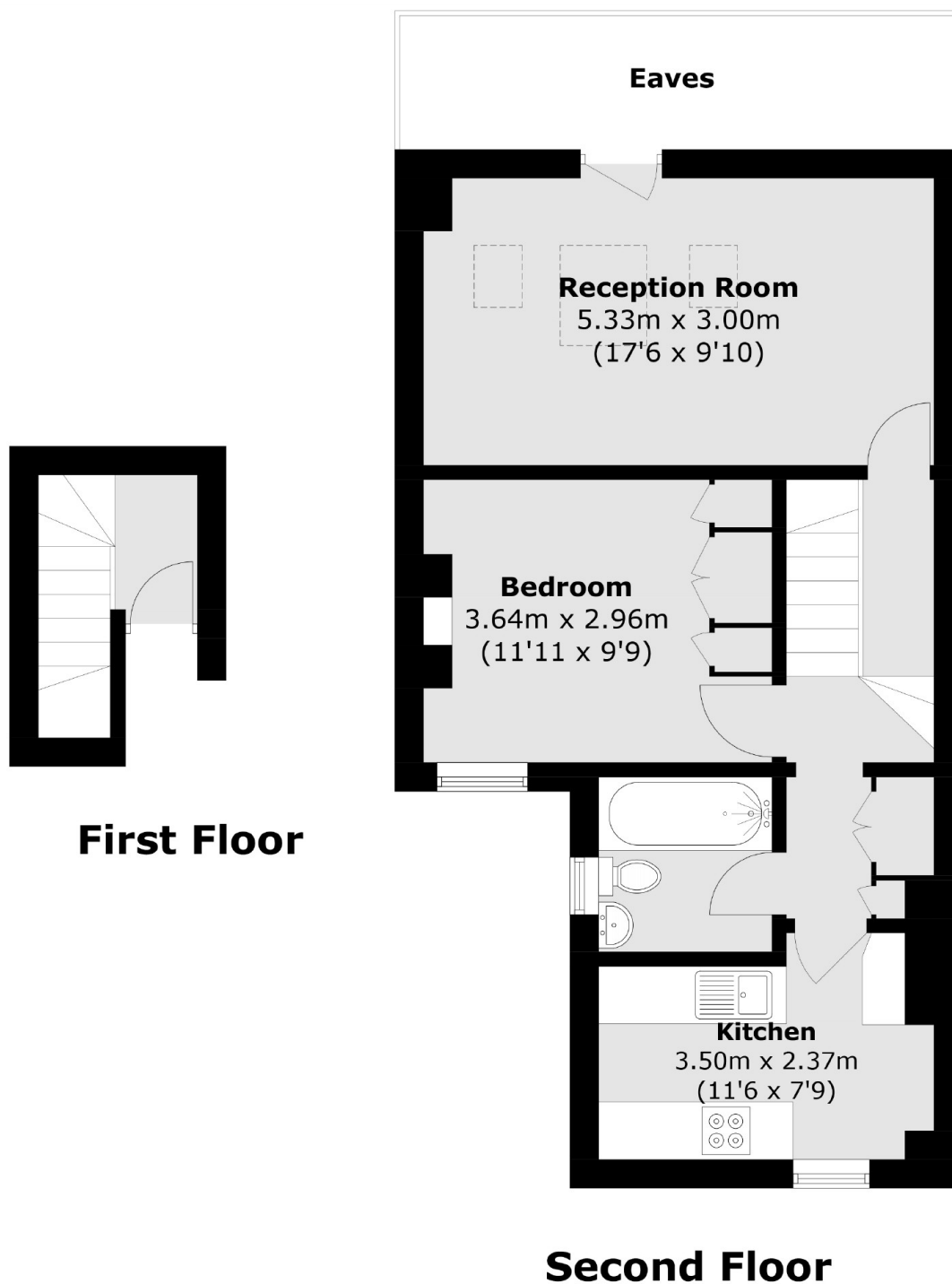
A charming, bright and well presented, one bedroom split-level apartment occupying a generous footprint over the top floor of this handsome Victorian house. The property retains a spacious front reception room, a sizeable kitchen, a large double bedroom with built-in wardrobes, a spacious hallway with built-in cupboards, a three piece bathroom and double glazed throughout.

Garratt Terrace is an enclave of highly desirable homes and apartments with excellent proximity to shops, bars, restaurants and the desirable Tooting Market. Excellent transport links are also on the doorstep with Tooting Broadway Underground and many bus links a short walk away.

### Features

- One Double Bedroom
- Victorian Conversion
- Top Floor Apartment
- Desirable Location
- Large Apartment
- Tooting Broadway

# Garratt Terrace, London, SW17



Total area (approx.): 50.6 sq. m (544.7 sq. ft)  
(Excluding Eaves)

## Dexters

Tooting  
48 Tooting High Street  
London  
SW17 0RG  
Sales  
020 8545 8582

Energy Rating: C. We aim to make our particulars both accurate and reliable. However they are not guaranteed; nor do they form part of an offer or contract. If you require clarification on any points then please contact us, especially if you're traveling some distance to view. Please note that appliances and heating systems have not been tested and therefore no warranties can be given as to their good working order.

 **RICS** | Regulated  
Estate Agent  
and Letting Agent

[dexters.co.uk](https://www.dexters.co.uk)