



St. Georges Grove, SW17

£2,000 Per calendar month

A well presented two double bedroom flat with ample storage situated on the top floor of Shakespeare Court, a modern residential development in Tooting.

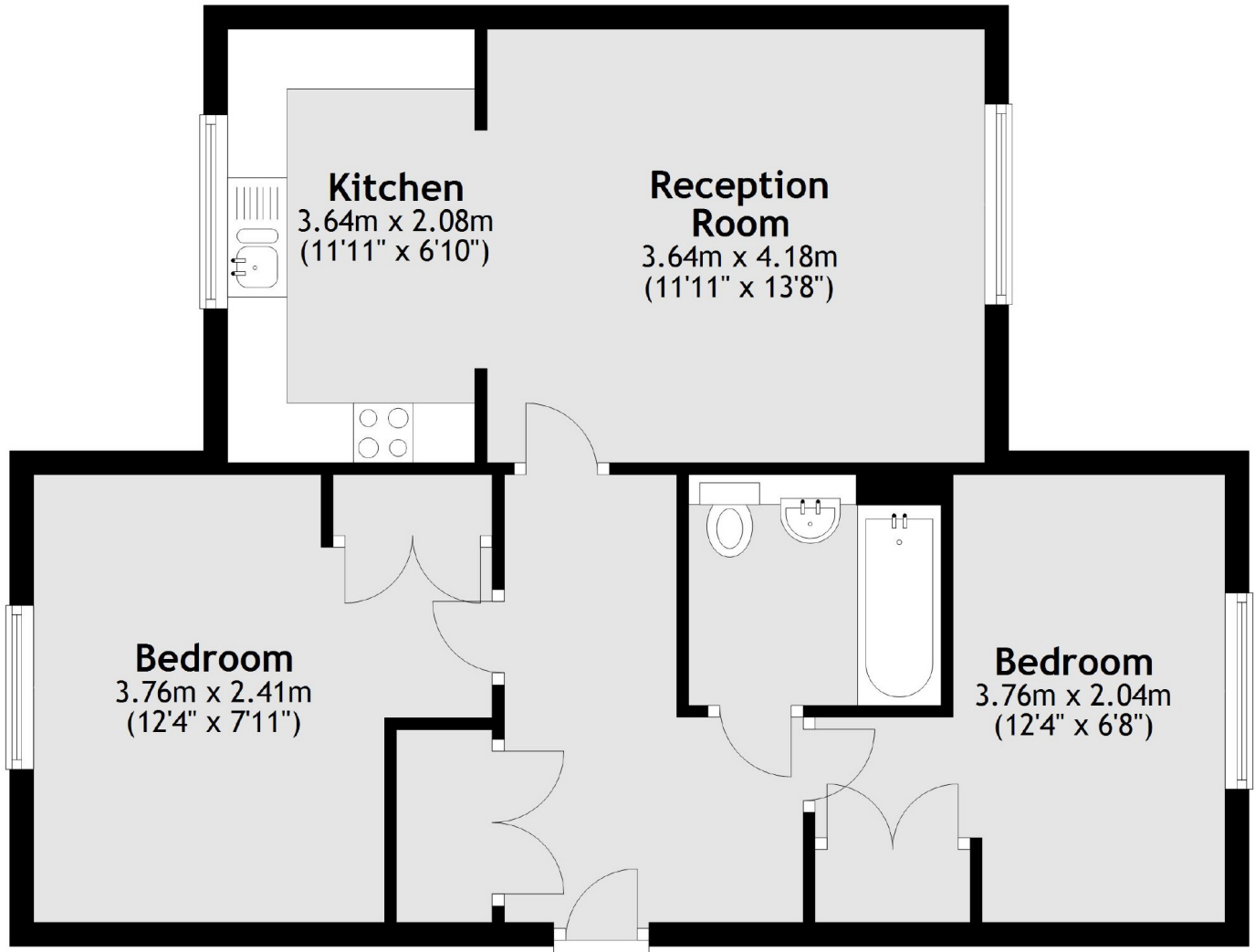
Shakespeare Court is situated within a modern development with communal garden access for residents, allocated off-street parking and a Tesco Express on site. There are great connections to public transport with Earlsfield, Tooting Broadway, Tooting Bec, and Wandsworth Common stations within walking distance.

Features

- Two Double Bedrooms
- Modern Kitchen
- Top Floor
- Allocated Parking
- Modern Development
- Communal Gardens

St. Georges Grove, London, SW17

Second Floor



Total area: approx. 61.4 sq. metres (660.5 sq. feet)