



Fairlight Road, SW17

£325,000

A stunning example of a larger than average one double bedroom apartment set over the first floor of this handsome Victorian building. The property retains a superb open-plan kitchen/reception room with an integrated kitchen, a comfortable seating and dining area and a spacious double bedroom with a three piece family bathroom.

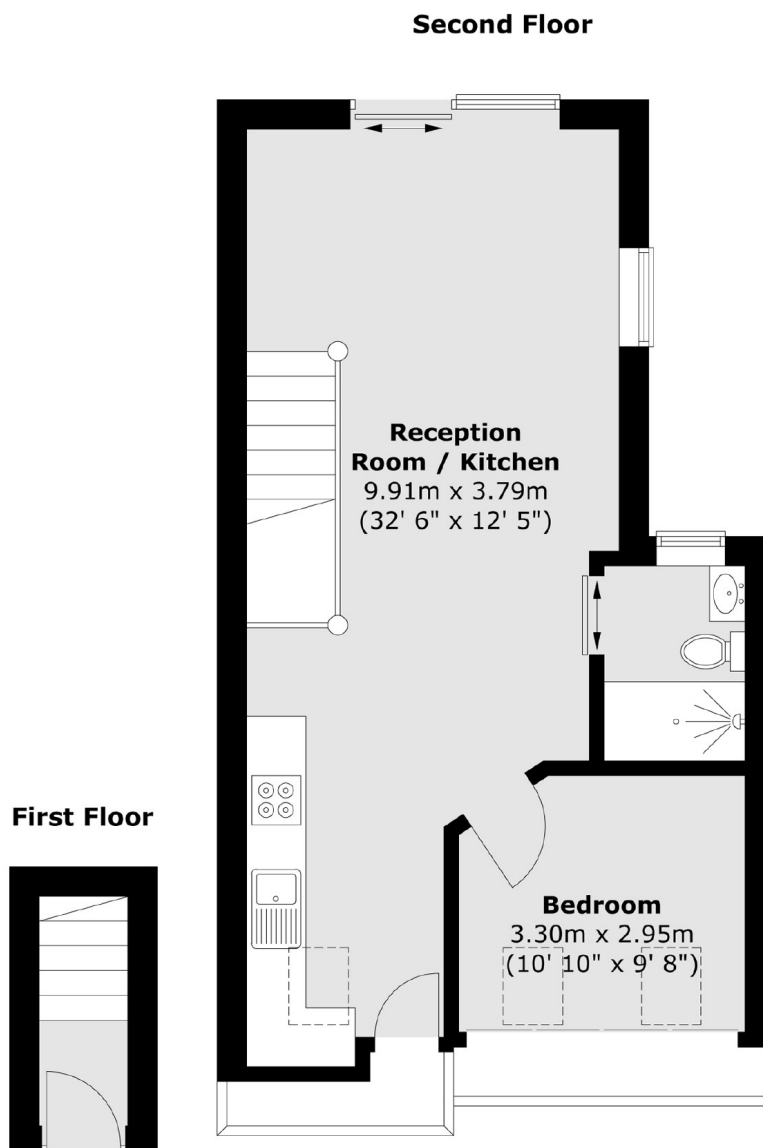
Fairlight Road is a quiet tree lined residential street moments away from central Tooting with a vast array of shops, bars and restaurants within walking distance. Easy access to the City can be found via Tooting Broadway Underground station which is a short stroll away.

Features

OFFERS IN EXCESS OF

- One Double Bedroom
- Top Floor
- Open-Plan Kitchen/Reception Room
- Juliette Balcony
- Eat-In Kitchen
- Desirable Location

Fairlight Road, London, SW17



Total area (approx.) : 45.1 sq. m (485 sq. ft)
Excluding Eaves