



Garratt Lane, SW17

£1,000,000

Dexters



Garratt Lane, SW17

A truly rare and exquisite example of a freehold home spanning over four storeys with exceptional accommodation throughout and a generous south facing garden with stunning interiors.

Retaining all originality of its period throughout, the property opens onto a front lounge wonderfully complimented by a round bay window and wood burner, making for a comfortable seating and dining area. At the heart of the home lies a well arranged and stylish fitted kitchen with wall and base units, integrated appliances and a breakfast island leading to a bright reception room with bi-folding doors opening onto a landscaped south facing garden with rear access. The ground floor is further balanced with a downstairs w/c.

Split over three floors, there are five double bedrooms and two bathrooms, with the principal bedroom positioned over two storeys and comprising an en-suite and walk in lobby/wardrobe. Subject to planning permission, the property retains further scope for alteration and extensions.

Garratt Lane is perfectly positioned for the bustling streets, shops, bars and restaurants of Tooting Broadway with easy access to the many bus and transport links of Tooting Broadway Tube Station. Earsfield Town Centre and Tooting Bec & Wandsworth Common are also nearby.

Features

- Five Bedrooms
- Four Storey Home
- Stunning Interior
- South Facing Garden
- Convenient Location
- Master Suite



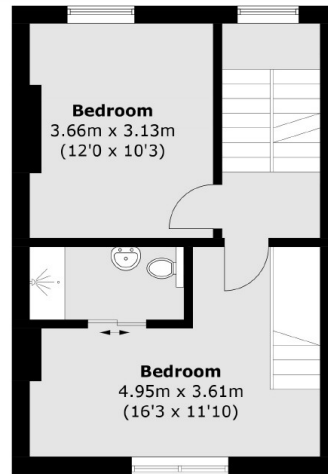




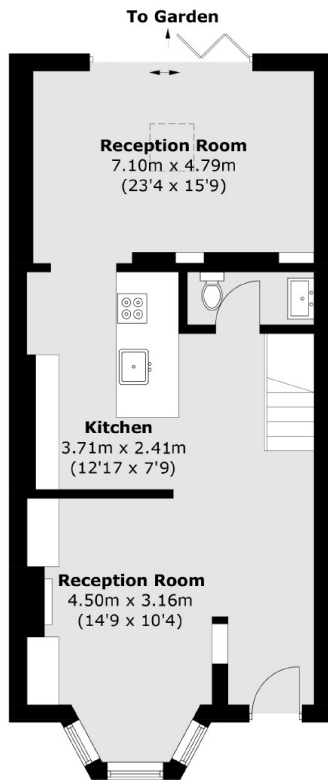
Garratt Lane, London, SW17



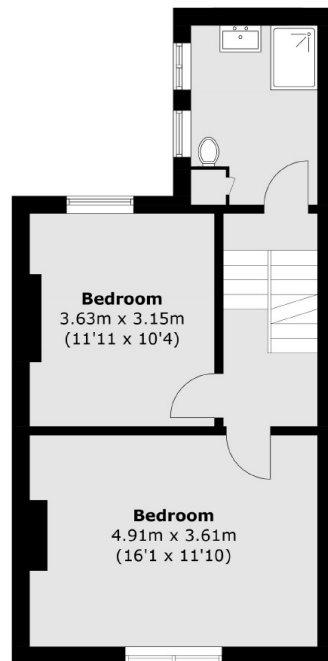
Third Floor



Second Floor



Ground Floor



First Floor

Total area (approx.): 153.7 sq. m (1,654.4 sq. ft)
(Excluding Eaves)