



Lessingham Avenue, SW17

£595,000

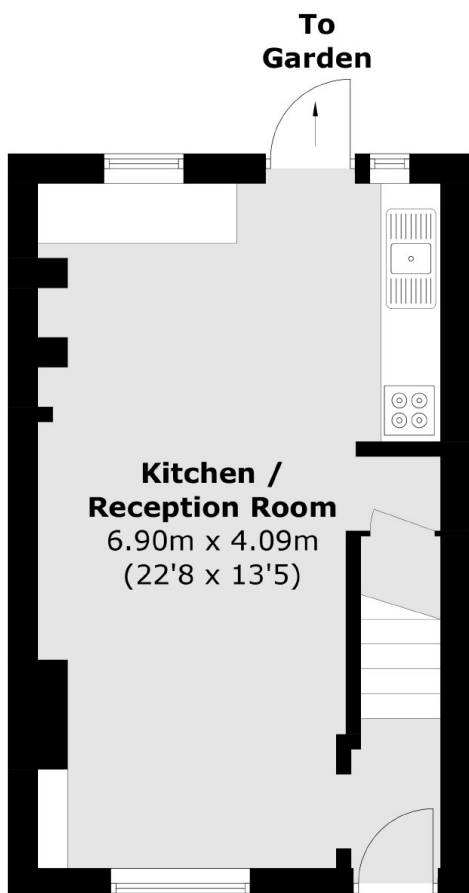
A charming and characterful two double bedroom freehold house set in the highly desirable Totterdown Fields Conservation Area with over 600 sqft of superb living space split over two floors. The property offers an open plan reception room/diner/ kitchen over the ground floor, two double bedrooms and a three piece bathroom with a very generous garden and scope for further extensions (STPP).

Lessingham Avenue Street is a quiet tree lined residential street nestled moments away from the green open spaces of Tooting Bec Common and the many shops, bars and restaurants of Tooting High Street with easy access to bus links and both Tooting Bec & Broadway Underground stations.

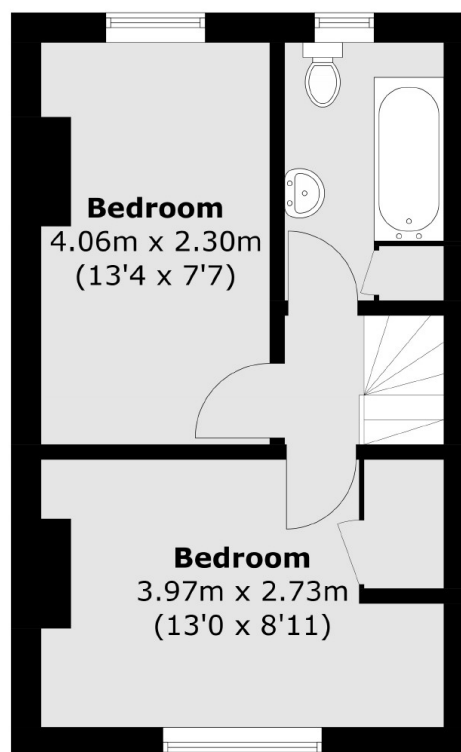
Features

- Two Double Bedrooms
- Freehold
- Large Garden
- Potential to Extend (STPP)
- Desirable Location
- Totterdown Conservation Area

Lessingham Avenue, London, SW17



Ground Floor



First Floor

Total area (approx.): 56.1 sq. m (603.8 sq. ft)