



Grenfell Road, CR4

£380,000

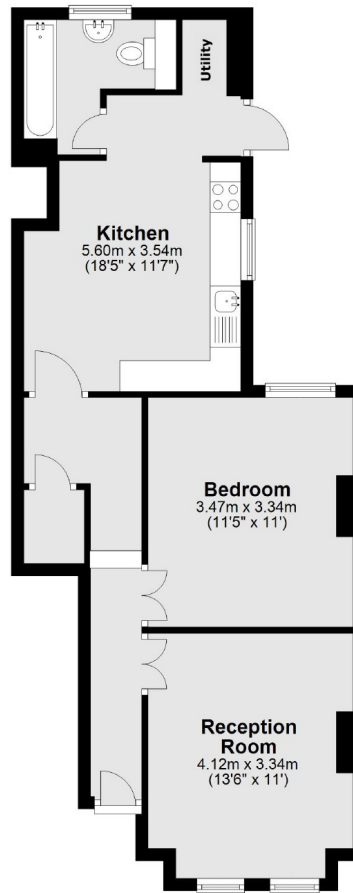
A spacious and well presented ground floor maisonette with a spacious front reception room, a large double bedrooms and a generous eat-in kitchen with direct access onto a private garden.

Grenfell Road is a quiet residential street within close proximity to an array of bars, restaurants and shops of Tooting High Street. Tooting (Overground) and Tooting Broadway Stations provides frequent transport connections and the open spaces of Figges Marsh are also nearby.

Features

- One Double Bedroom
- Private Garden
- Own Front Door
- Desirable Location
- Front Reception Room
- Blank Canvas

Grenfell Road, Mitcham, CR4



Total area: approx. 55.8 sq. metres (600.5 sq. feet)