



Thirsk Road, CR4

£650,000

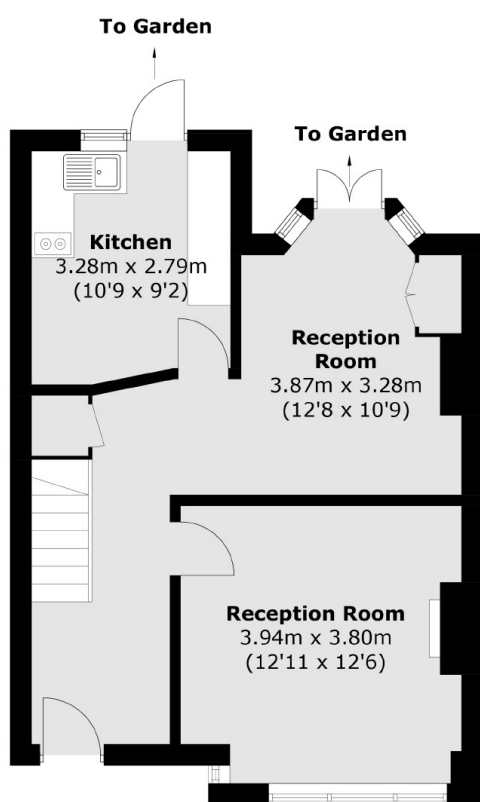
A sizeable mid-terrace home with superb proportions throughout benefitting from off-street parking, four bedrooms and two bathrooms with huge scope for extending (STPP).

Nestled just off the open spaces of Figges Marsh, Thirsk Road is perfectly placed for the amenities of London Road and the frequent Thameslink rail services of Tooting mainline station.

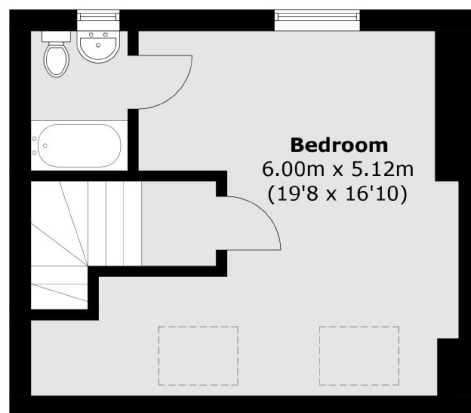
Features

- Four Bedrooms
- Mid-Terrace
- Off-Street Parking
- Large Garden
- Potential to Extend (STPP)
- Two Bathrooms

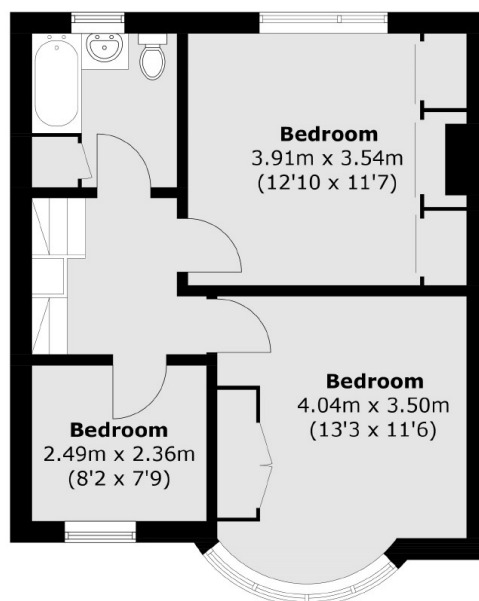
Thirsk Road, Mitcham, CR4



Ground Floor



Second Floor



First Floor

Total area (approx.): 122.8 sq. m (1,321.8 sq. ft)