



Ashvale Road, SW17

£5,300 Per calendar month

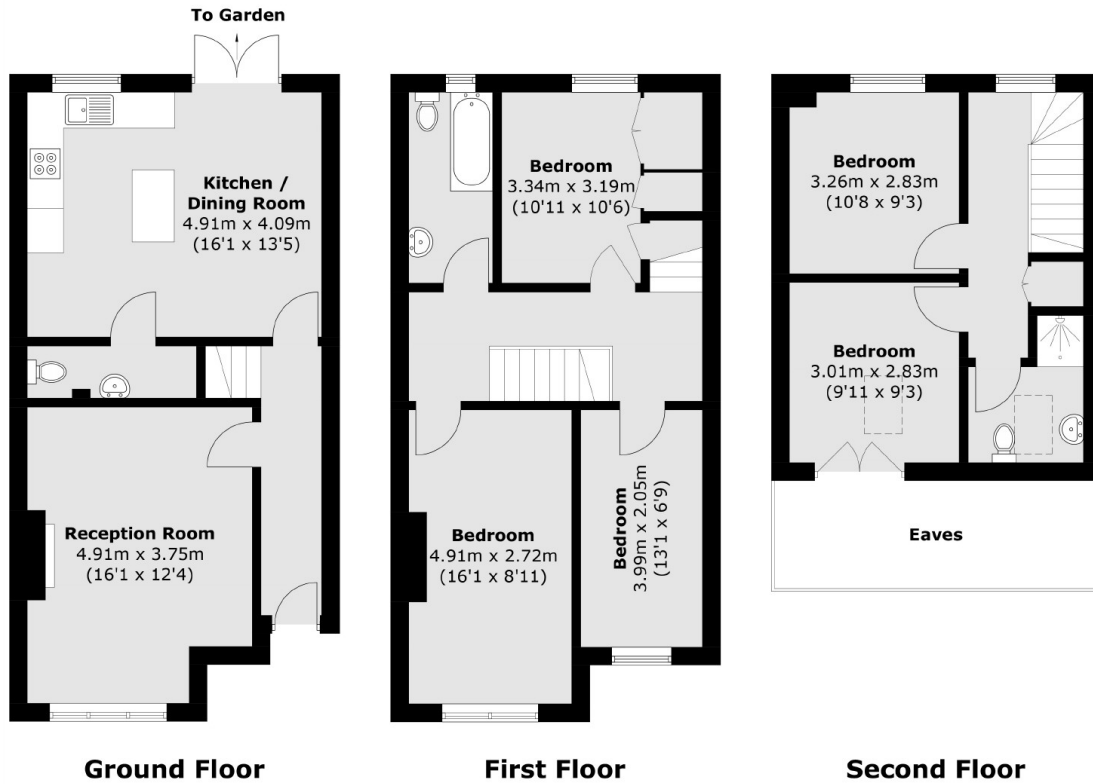
A newly refurbished five bedroom, two bathroom home set over three floors with a large kitchen/dining room leading to a private garden ideal for a family or professional sharers. This property is offered unfurnished.

Ashvale Road is conveniently located for Tooting Broadway tube station. Tooting High Street with its vast array of restaurants and bars is also close by as are the beautiful open spaces of Tooting Bec Common.

Features

Newly Refurbished
Five Double Bedrooms
Two Bathrooms
Reception Room
Modern Kitchen
Family or 5 Professional
Sharers

Ashvale Road, London, SW17



Total area (approx.): 126.3 sq. m (1,359.5 sq. ft)
(Excluding Eaves)