



Southcroft Road, SW17

£500,000

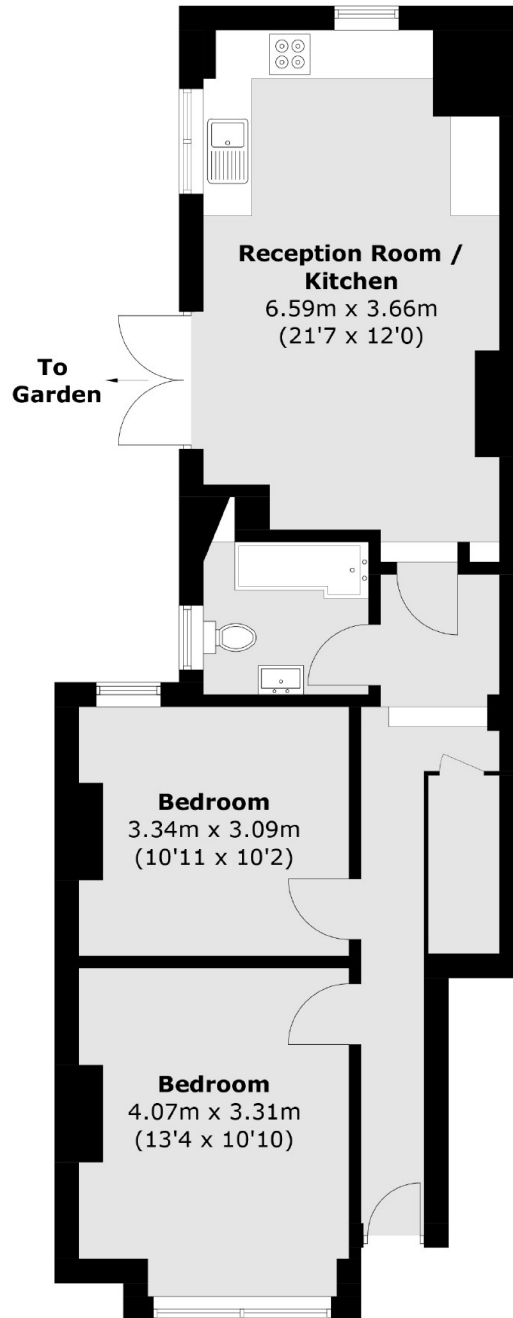
A charming two double bedroom ground floor maisonette set in a handsome Victorian building. Accommodation includes two double bedrooms, a modern three piece bathroom, a spacious eat-in kitchen/reception and a private south facing garden.

Southcroft Road is conveniently located for the many cafes, restaurants and bars of Mitcham Road and Furzedown Village and is beautifully complimented with a vast array of transport links with Tooting Overground and Tooting Broadway Underground Stations a short walk away.

Features

- Long Lease
- Two Double Bedrooms
- Private Garden
- Victorian Building
- Own Front Door
- Open-Plan Kitchen

Southercroft Road, London, SW17



Total area (approx.): 63.8 sq. m (686.7 sq. ft)