



## Links Road, SW17

£775,000

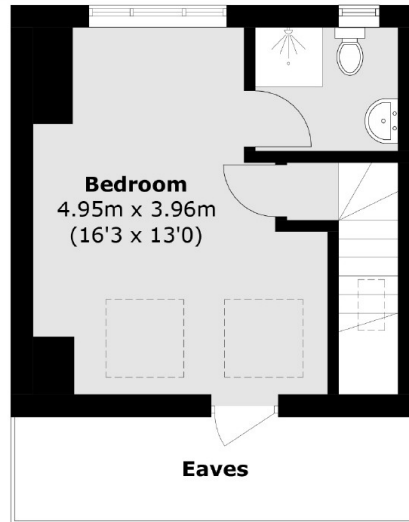
A charming and wonderfully presented mid-terrace home positioned in the highly desirable ABC Roads with accommodation that spans over three floors. Opening onto a large front reception room, the property retains a spacious kitchen/dining room, two bedrooms and a family bathroom over the first floor and a further double bedroom with an en-suite over the top floor. The property retains all original features, with solid floors and fireplaces throughout with a generous rear garden with scope for extending (STPP).

Links Road is a desirable residential street occupying great proximity to central Tooting & Streatham town centre. The vast shops, bars and restaurants of Tooting Broadway as well as excellent transport links of the Underground and Tooting Railway are within walking distance.

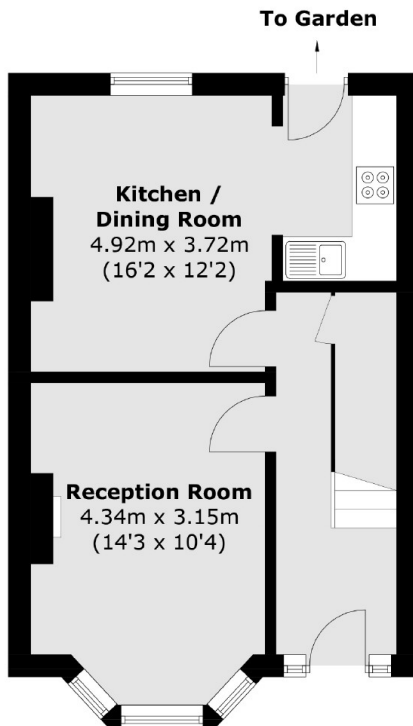
### Features

- Three Bedrooms
- Rear Garden
- Original Features
- Potential to Extend (STPP)
- ABC Roads
- Open-Plan Kitchen/Reception Room

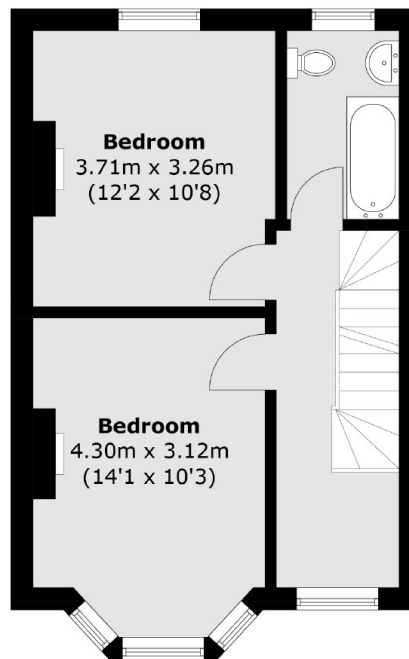
# Links Road, London, SW17



**Second Floor**



**Ground Floor**



**First Floor**

Total area (approx.): 101.0 sq. m (1,087.1 sq. ft)  
(Excluding Eaves)