



Prince Georges Road, SW19

£480,000

An impressive and larger than average stylish two double bedroom apartment with absolutely stunning views and a footprint that extends to approx 916 sqft.

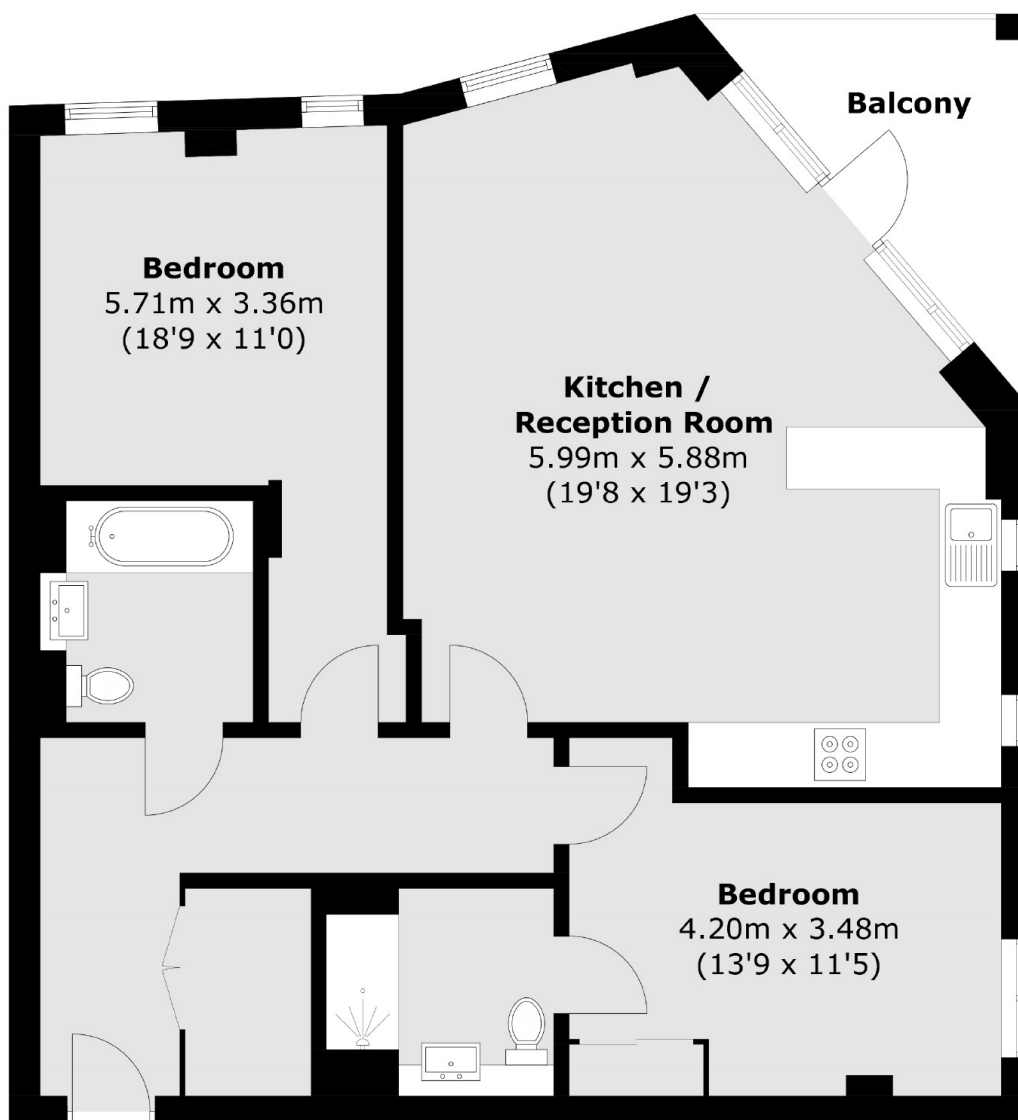
Accommodation includes a spacious open-plan kitchen/reception room with a comfortable seating and dining area, a balcony with south facing views, two double bedrooms and two bathrooms. The property also benefits from two communal roof terraces and secured bike storage.

Mizen Heights is located in the heart of Colliers Wood with a vast array of shops, bars and amenities on the doorstep, with the superb transport links of Colliers Wood and Wimbledon town centres very close by.

Features

- South Facing Views
- Private Balcony
- Open-Plan Kitchen/Reception Room
- Two Double Bedrooms
- Two Bathrooms
- EWS1 Compliant

Prince Georges Road, London, SW19



Total area (approx.): 85.3 sq. m (918.2 sq. ft)
Balcony: 5.8 sq. m (62.4 sq. ft)