



Fairlight Road, SW17

£465,000

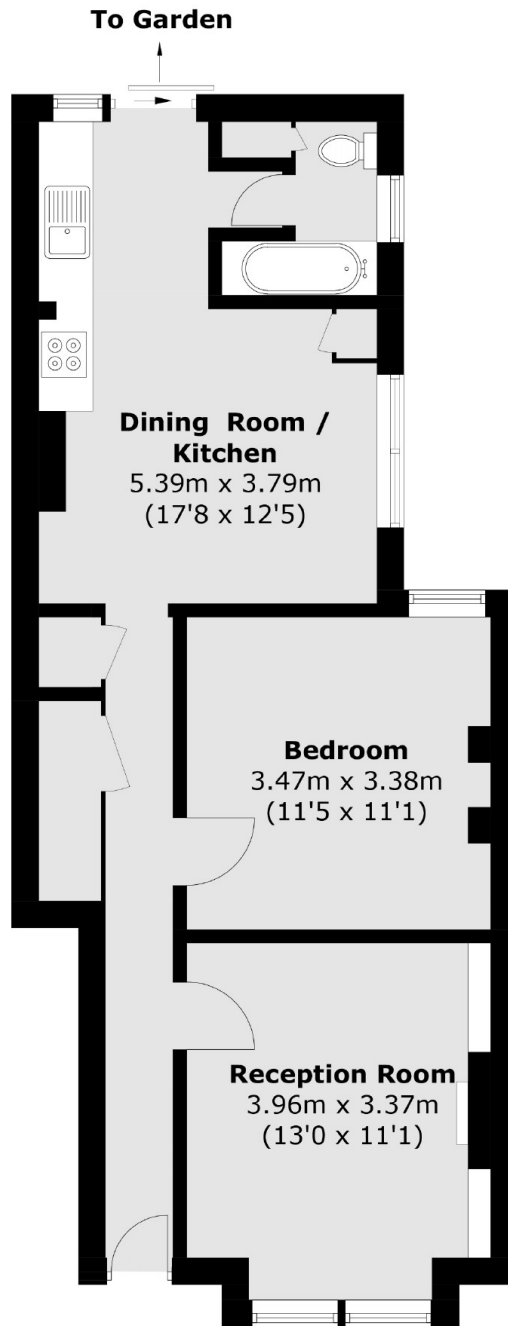
An impressive and larger than average ground floor maisonette in superb condition throughout. The property opens onto a spacious front reception room furnished with plantation shutters, a fireplace and bespoke cabinetry with a spacious double bedroom found off the hallway. To the rear, the property retains a generous eat-in kitchen with direct access onto a large landscaped garden.

Fairlight Road is a quiet tree lined residential street moments away from central Tooting with a vast array of shops, bars and restaurants within walking distance. Easy access to the City can be found via Tooting Broadway Underground station which is a short stroll away.

Features

- One Double Bedroom
- Own Front Door
- Large Garden
- Stylish Maisonette
- Desirable Location
- Eat-In Kitchen

Fairlight Road, London, SW17



Total area (approx.): 54.5 sq. m (586.6 sq. ft)

Dexters

Tooting
48 Tooting High Street
London
SW17 0RG

Sales
020 8545 8582

Energy Rating: D. We aim to make our particulars both accurate and reliable. However they are not guaranteed; nor do they form part of an offer or contract. If you require clarification on any points then please contact us, especially if you're traveling some distance to view. Please note that appliances and heating systems have not been tested and therefore no warranties can be given as to their good working order.

 **RICS** | Regulated
Estate Agent
and Letting Agent

[dexters.co.uk](https://www.dexters.co.uk)