



Streatham Road, CR4

£435,000

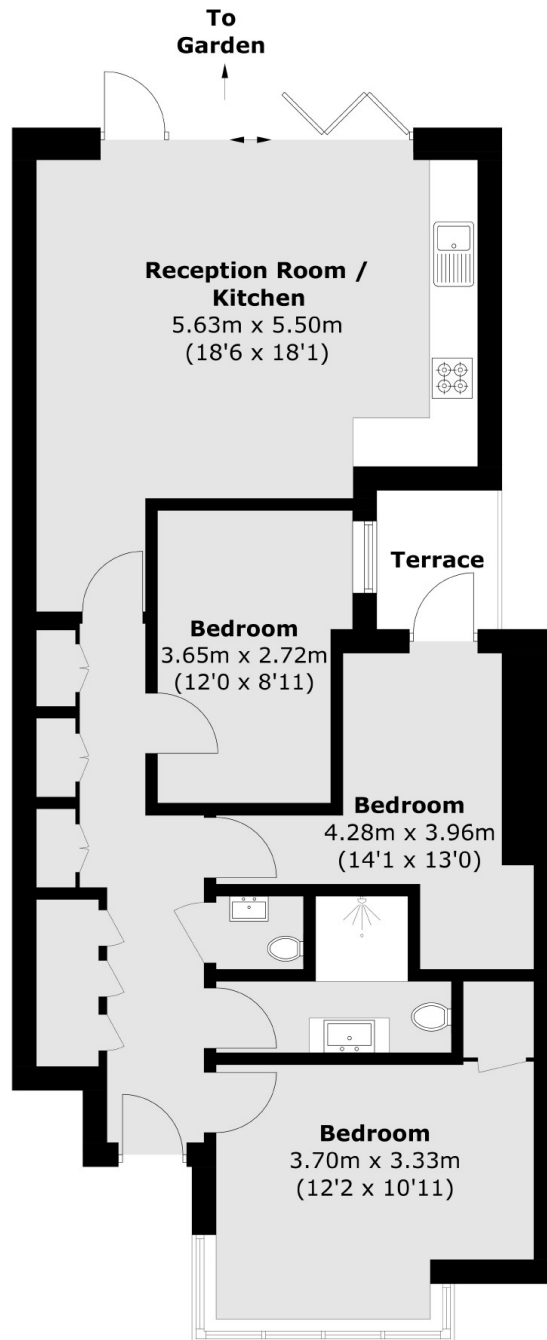
A spacious three double bedroom apartment in exemplary condition throughout with an open-plan kitchen/reception room, a spacious family bathroom, separate w/c and a private garden with rear access with space for off-street parking.

Sitting equidistant to Tooting and Streatham, Streatham Road is wonderfully positioned for the vast shops, bars and restaurants of both town centres, with vast selection of buses and excellent transport links of Tooting Railway and Streatham Common stations also close by.

Features

Three Double Bedrooms
Private Garden
Excellent Condition

Streatham Road, Mitcham, CR4



Total area (approx.): 75.1 sq. m (808.4 sq. ft)
Terrace (approx.): 2.6 sq. m (28.0 sq. ft)