



Henry Doulton Drive, SW17

£375,000

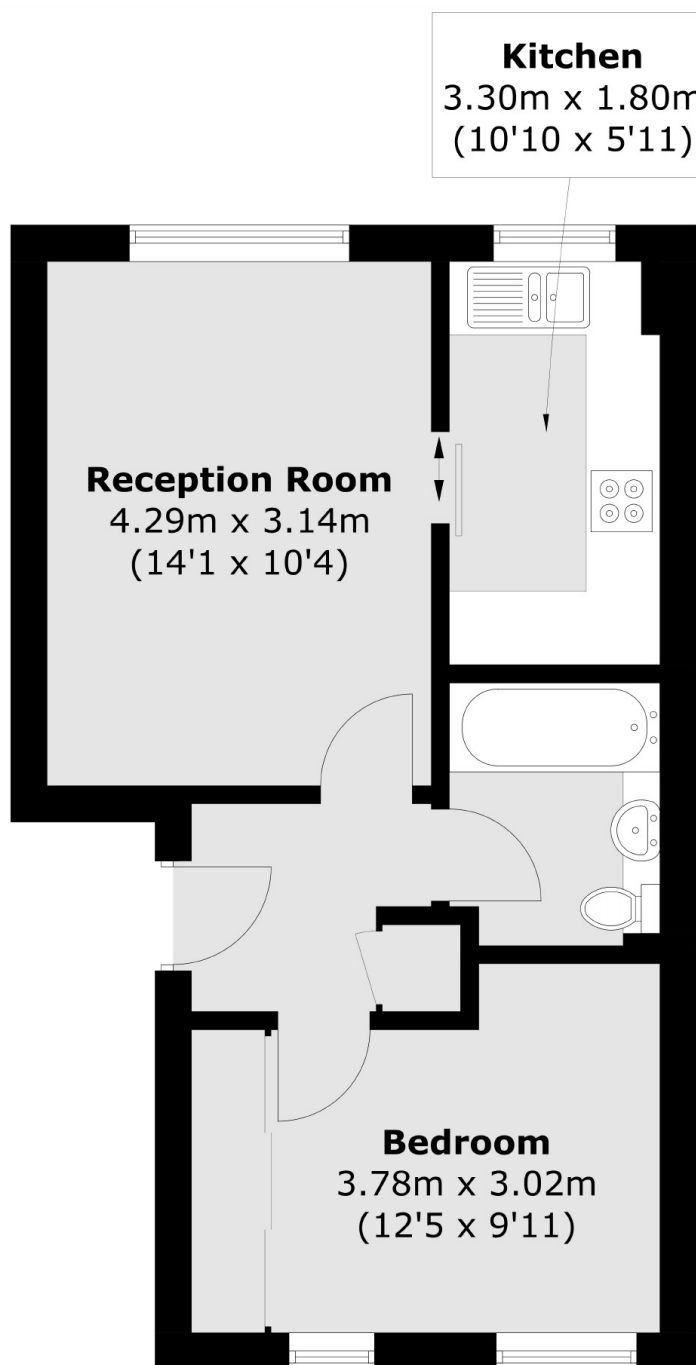
A beautifully presented and stylish apartment set in the heart of Heritage Park having been lovingly maintained by the current owners. The property opens onto a generous front reception room with a modern and contemporary kitchen, a spacious double bedroom and a three piece family bathroom. The property also retains x2 parking spaces.

Henry Doulton Drive represents a close knit community of exclusive homes nestled away by Tooting Bec Common, with the vast amenities of Balham and Tooting town centres only a short walk away. Excellent transport links can be found via Tooting Bec Underground station.

Features

- One Double Bedrooms
- Heritage Park
- Stylish Apartment
- x2 Parking Spaces
- Modern Kitchen
- Desirable Location

Henry Doulton Drive, London, SW17



Total area (approx.): 38.8 sq. m (417.6 sq. ft)